



# NZ Army Staff College and Linton Military Camp- 1942 “80<sup>th</sup> Anniversaries”

LTCOL Peter Wood  
New Zealand Wars Study Centre  
NZDF Command and Staff College, Trentham

MMMHP, 10 Mar 22

# 1941 and 1942

- 1941: “Defeat after Defeat”
  - 2 NZEF: Greece and Crete, North Africa
  - Pearl Harbour 7 Dec 41 and Japanese advance into Asia- Pacific
- 1942: “The End of the Beginning”
  - 15 Feb: Fall of Singapore
  - 19 Feb: Bombing of Darwin
  - 27 Feb: NZ Chief of General Staff advises that NZ can expect an attack from a Japanese Division supported by three aircraft carriers
  - May:
    - Battle of the Coral Sea
    - 24: Japanese reconnaissance flight over Auckland
  - Jun: First US troops (5,000 USMC) arrive in Wellington and Battle of Midway
  - Jul: NZ Steamer *Hauraki* (7,113 tons) captured by Japanese armed merchant cruisers.

## DOMINION'S DEFENCE.

### ROLE OF HOME GUARD.

#### BETTER RESPONSE NEEDED.

Per Press Association.

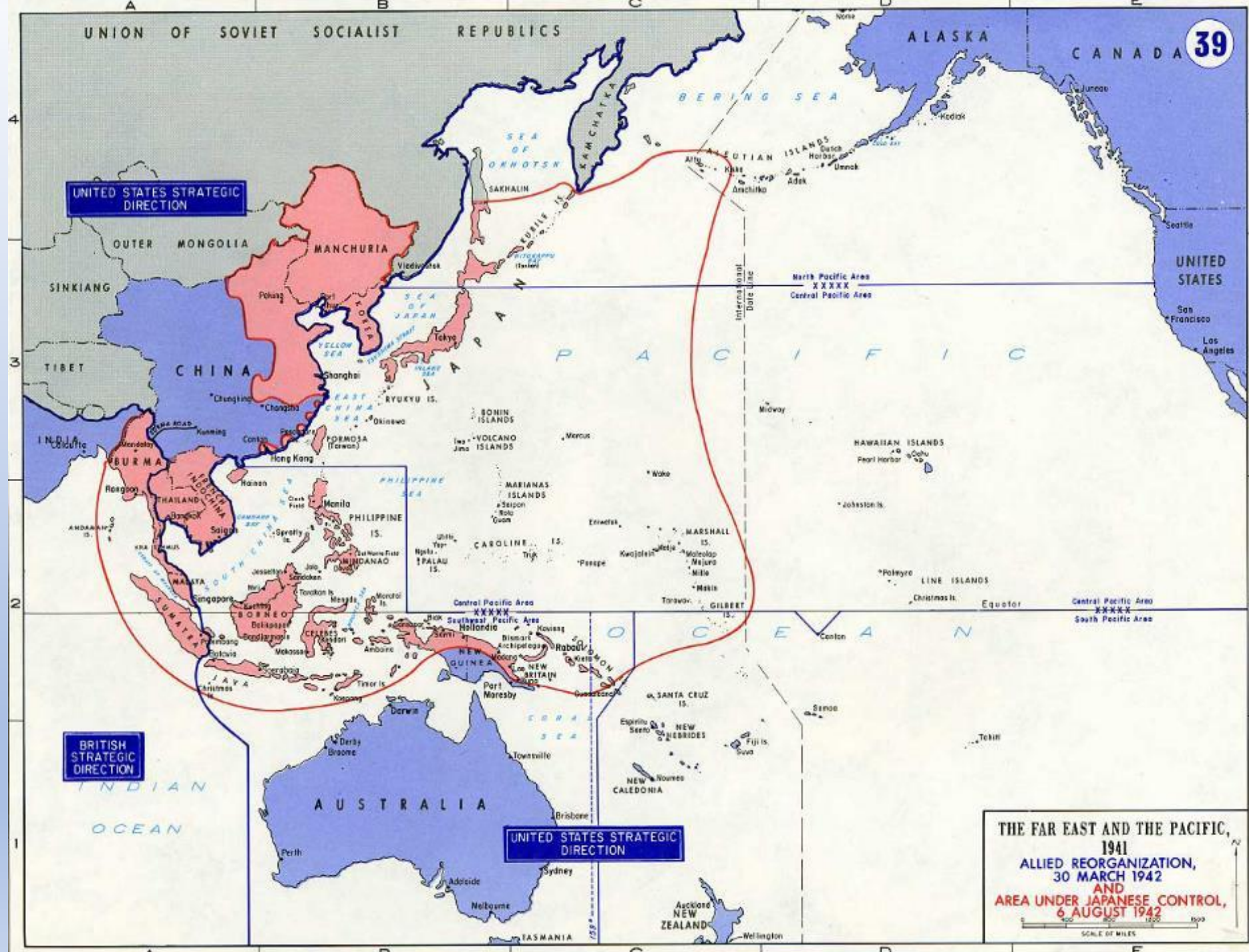
CHRISTCHURCH, Jan. 11.

One hundred thousand men are wanted for the Home Guard in New Zealand. Enrolments at present number 50,000. An appeal for the remaining 50,000 was made by Hon. R. Semple to-day.

“I appeal to the manhood of New Zealand to rally to their country's colours,” said Mr Semple. “We must be prepared to defend these little islands of ours. They are the most prosperous and the most free in the world. It is our job to defend that heritage and, above all, to keep an eye on internal traitors for, believe me, they are here.

“To the boys who have left their homes and loved ones and gone overseas we owe a debt of gratitude. The best we can do is to prepare ourselves to defend their homes and their loved ones while they are away protecting us. If we do not do that, then we will let them down. That would be treason of the worst hue.”





UNITED STATES STRATEGIC DIRECTION

BRITISH STRATEGIC DIRECTION

UNITED STATES STRATEGIC DIRECTION

THE FAR EAST AND THE PACIFIC,  
1941  
ALLIED REORGANIZATION,  
30 MARCH 1942  
AND  
AREA UNDER JAPANESE CONTROL,  
6 AUGUST 1942



# Melrose Battalion, Wellington: 10 Feb 42

“Aggressive defence”

Against “large scale  
landing”

“... counterattacks...”

*OC Copy*

(I.)

APPRECIATION OF THE SITUATION  
BY  
COMMANDER, MELROSE BATTALION (H. G.)  
AT  
ISLAND BAY, 1200 HRS., 10th Feb., 1942.  
Ref. Maps: Melrose Battalion Area Plan (attached).  
Scale: 1/7920 (10 ch. to 1").

(II.) OBJECT.

To provide a plan of aggressive defence against the estimated attack in the Battalion Area.

(III) CONSIDERATIONS.

Scale of attack.

- (a) Landing by armed parties with the object of destroying vital points within the area;
- (b) Large scale landing within the area as part of a partial or full-scale invasion of New Zealand, with the object of capturing the City of Wellington.

Conclusion: Prepare plan for (b), which automatically provides for (a)

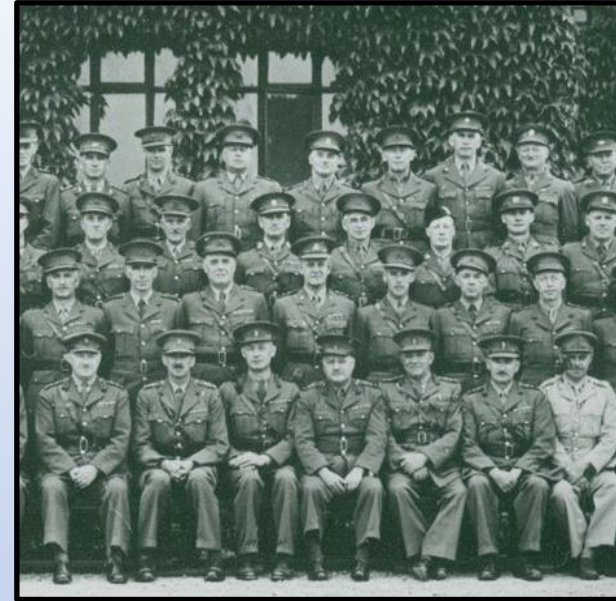
(IV.) ROLE OF MELROSE BATTALION.

The role of the Melrose Battalion is:

- (a) To collect and immediately forward accurate information concerning the enemy and his movements to higher authorities;
- (b) To impose the maximum of casualties on the enemy and prevent his landing and infiltration;
- (c) By aggressive patrols and local counter-attacks deny the enemy passage into or through the Battalion Area.

# Scope

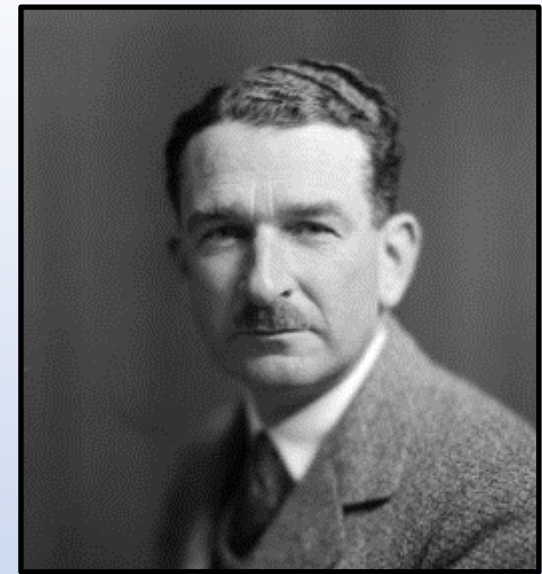
- Sir Geoffrey Perren
- Army Staff College, Massey
  - Need identified
  - Commandant, courses and throughput
  - Facilities
  - Its successors today
- Linton Camp
  - Need identified
  - Construction and users
  - Evolution
  - Linton Camp today
- Summary





# Geoffrey Peren

- Born: England 30 Nov 1892
- BSc Agriculture, University of Toronto
- Served in the Royal Field Artillery at Ypres
- Awarded the Croix de Guerre
- Recommended for MC at first battle of the Somme
- Demobilises as Lieutenant First Class. War service included Liaison Officer to the RAF and Intel Officer on HQ staff.
- University lecturer Bristol 1920- 24
- Applies for chair of Agriculture Victoria University College 1923, he and his wife arrive Wellington June 1924
- Establishes Massey Agricultural College and appointed Principal 1927
- Foresees likelihood of war. Establishes a troop of the Manawatu Mounted Rifles in 1938 from Massey staff and students. Commands MMR from 1940.
- Appointed to command 2<sup>nd</sup> Infantry Brigade (Home Defence) then as a Brigadier, commands 4<sup>th</sup> NZ Division (Home Defence)
- Facilitates Massey as the NZ Army Staff College site



Geoffrey Peren, 1933



Colonel Peren, circa 1942

# Army Staff College- Massey



# The need identified

- MGEN Sir Guy Williams, UK MIL Adviser to NZ Government, Memo to War Cabinet, 2 Jul 41:
- “I have been struck by the fact that unit commanders and seconds-in- command are ... out of date or lacking in knowledge, and that the officers holding second or third grade staff appointments [MAJ and CAPT] have ...received very little training for staff employment...”
- Recommends:
  - Establishing a command and staff college
  - That it runs staff as well as command courses
  - UK be approached to provide Commandant and 4 officers as staff. Two staff from NZEF.
  - Regarding Home defence; Williams recommends brigade groups as the basis

~~SECRET~~

COPY NO. 30 SERIES  
D-10

MEMORANDUM NO. 4 FOR THE WAR CABINET.

ON

THE MILITARY EDUCATION OF OFFICERS.

1. In the course of my visits to the three Districts, I have been struck by the fact that Unit Commanders and Seconds-in-Command are in the majority of cases out of date or lacking in knowledge and that the officers holding second or third grade staff appointments have, in most cases, received very little training for staff employment. I find that no permanent arrangements exist for the higher military education of officers, which is so essential in modern war.

2. This state of affairs means that a serious lack exists in efficient, trained officers for: -

(a) The staff of Div., Field Force and Bde. H.Q.  
(b) the Unit Commanders in the Dominion, whose duty it is to train their Units and junior officers,  
and (c) Staff and Regimental appointments in future N.Z.E.F. reinforcements or new formations which may become desired or necessary.

3. To remedy this, I consider it essential to start in the immediate future a "Command and Staff School", to train, per year, 96 of each of the following types of officer: -

(a) Regimental Commanders and Seconds-in-Command.  
(b) Officers to hold 2nd and 3rd grade Staff appointments.

4. A year's work of this School would be: -

2 Senior Officers' Courses @ 7 weeks	= 14 weeks
2 Staff Officers' " @ 15 weeks	= 30 "
4 gaps between Courses @ 2 weeks	= 8 "
	52 weeks

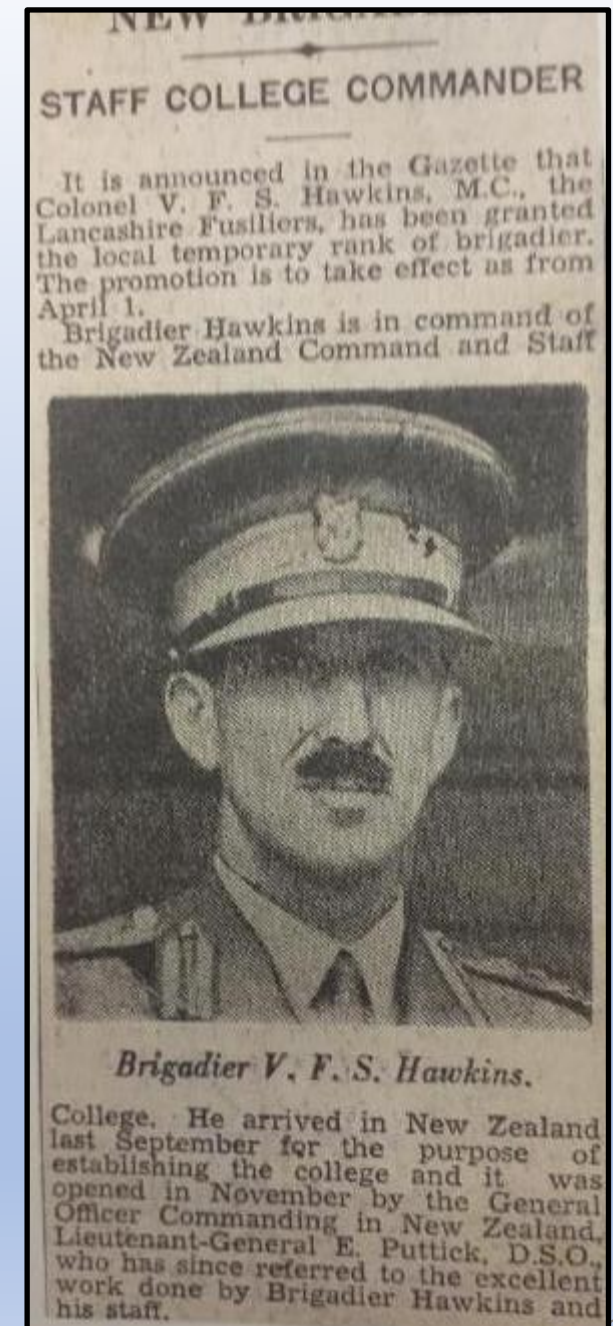
5. (a) The Instructional Staff required for this School would be :-

Commandant (Colonel) 1



# COL VFS Hawkins, MC, Lancashire Fusiliers

- Aug 41: GSO1 Training, Northern Command, India
- Directed by GEN Sir Archibald Wavell to proceed to New Zealand to establish a staff college (he had expected a Brigade Command as next appointment)
- 18 Sep 41: On arrival NZ, advised preferred location was Waiouru! (GEN Williams' recommendation). Hawkins quickly determines the location is unsuitable.
- On the suggestion of BRIG Weir Commander Central District, Hawkins approaches Massey College PROF GS Peren, Principal of Massey College and a Territorial
- Hawkins' Reconnaissance Report 27 Sep 41 recommends Massey College as the Staff College location (space available, proximity to Army HQ...) or will leave NZ
- First staff officers course to be 50 students 19 Jan 42



# College Purpose; Commandant's Directive, dated 1 Jan 42

- To train and test officers for command in New Zealand
- To train and to test officers to fill various staff appointments in the NZ Army
- To direct study on matters and problems which affect the fighting efficiency of the NZ army in particular, and the fighting forces generally
- To give special study to, and subsequently report on, all problems and other matters which are referred by Army HQ for special consideration
- “The teaching shall be in consideration for war in New Zealand”
- First staff officer course assembles 19 Jan 42. 49 students. 15 weeks. Ends 2 May 42.

NEW ZEALAND MILITARY FORCES.

RECEIVED  
14 JAN 1942  
HEADQUARTERS

HEADQUARTERS,  
STAFF COLLEGE, N.Z.,  
P.O. BOX 619,  
PALMERSTON NORTH.  
12 Jan 42. 194

ARMY HEADQUARTERS,  
N.Z. MILITARY FORCES,  
WELLINGTON.

Lecture - Modern Warfare Strategy 2.

In response to your request, enclosed please find 4 copies of Lecture on Modern Warfare, Strategy 2.

Capt.  
For Colonel,  
COMMANDANT.

(D. 254/2/120) 2,000 (444/6/41-475)



# STAFF COLLEGE, NEW ZEALAND.

## FIRST STAFF OFFICERS' COURSE, JANUARY—APRIL, 1942.



LEWIS STUDIO LTD., Palmerston North

Row—D. TREVARTHEN (Major), S. BERKELEY (Major), M. WALLACE (Major), C. MENZIES (Major), G. KELLAWAY, M.C. (Major), L. ROBERTSON (Pl.-Lieut.), G. YEREX (Major), S. WATKINS (Capt.), J. BROOKE-WHITE (Lt.-Col.)  
HOGG (Lt.-Col.), H. E. FERNYTHOUGH (Lt.-Col.), V. P. S. HAWKINS, M.C. (Commandant), J. FRASER (Wing Comd.), F. L. DAVIS (Lt.-Col.), J. K. GREENWOOD (Lt.-Col.), TOM BASSETT (Major), F. GRACE (Major), F. ALLAN (Major),  
W. BASSETT (Major), H. THOMPSON (Lieut.), J. THOMPSON (Capt.), G. STOCK (Capt.)

Row—G. WADDELL (Capt.), E. WINKLER, M.C. (Capt.), R. YOUNG (Lieut.), M. LEADBETTER (Capt.), G. LEANE, M.C. (Capt.), B. HOGG (Capt.), S. CLARKE (Lieut.), G. OILCHRIST (Capt.), S. SIDDELLS (Lieut.), D. LAWFORD  
(Lieut.), T. CAUGHNEY (Capt.), H. HEWAN (Lieut.), R. COX (Capt.), H. GODDARD (Capt.), F. HOPWOOD (Capt.), E. REPINER (Capt.), G. BARNETT (Capt.)

Row—A. GILLIES (Capt.), W. MUNDAY (Capt.), R. BLACKER (Lieut.), R. CHIMP (Capt.), J. GILLIES (Major), F. CLARK (Capt.), W. BOYD (Lieut.), E. WILLS (Major), N. HANNA (Capt.), J. McMURRAY (Capt.), J. BRACKWELL (Capt.)  
R. SPEER (Lieut.), C. HEWSON (Capt.), T. STOCKDILL, D.C.M. (Lieut.), J. KIDBLEWHITE (Capt.), R. WEST (Capt.)

# Course types:

- Senior Officers Course (8 weeks): “I was forcibly impressed with the lack of knowledge of students, both of other arms, and of the methods of cooperation between the arms.”
- Staff Officers Course (15 weeks)
- Junior Staff officers Course (6 weeks)
- Tactical Courses (2 weeks)



Members of the New Zealand Home Guard, Christchurch West Battalion, in camp, Jan 42



# Staff Officers' Courses

- To train officers for staff appointments in field and static formations
- 19 Jan- 2 May 42:
  - 49 students: Hawkins displeased with student selection criteria
    - 26: Pass. Assessed as suitable, granted SC postnominals
    - 12: Not recommended SC (mainly "owing to age"), suitable certain appointments
    - 11: Not recommended SC or staff appointments, cleared for instructional duties, or Not suitable for extra regimental employment
- Main issues: (older) age of the students, lack of suitability; Commandant stresses candidates must have regimental experience and preferably some staff experience prior to the course
- 11 May - 22 Aug 42: 40 out of 50 students Pass. Average age lower. Two Air Force students attend.



Instructors and students of the Staff College look on while a troop of tanks demonstrate the laying down of a smoke screen and the outflanking of an "enemy" position.

- Auckland Star, Vol LXXIII, Issue 193, 17 August 1942, p.2

# Syllabus and Methods of Instruction

- Staff Duties: staff work and organisation, orders and instructions, appreciations and plans
- Tactics: **Brigade group** advance/attack/withdrawal and defence. River crossing. Beach defence.
- Organisation: Organisation and employment of All Arms [i.e. other corps] in a Brigade setting
- Intelligence: Intelligence cycle at Brigade HQ
- Administration: Principles and types of transport and supply of fuel and other supplies in support of brigade level operations
- Training: How to conduct exercises, with and without troops, in a brigade setting
- Miscellaneous: **Operations within New Zealand** and 4 days "combined operations" at end of course
- Air Operations: Making air reconnaissance plan, briefing of pilots, direct support to Army operations

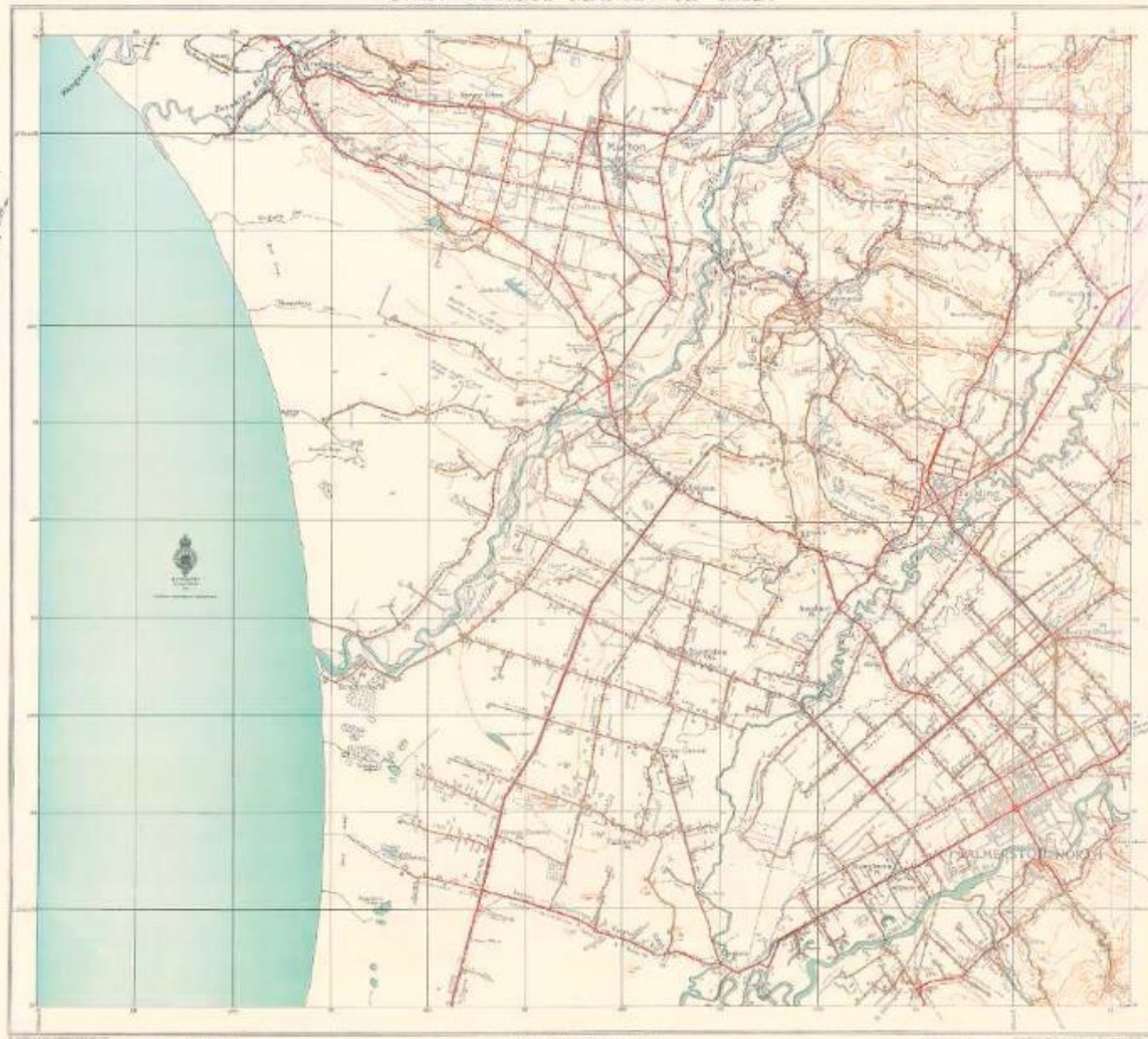


Students attend lecture

- Presentations (lectures); by staff and SMEs, sometimes visiting senior commanders
- Tutorial syndicates
- Sand model schemes
- Tutorial and indoor exercises
- Outdoor exercises and demonstrations



## STAFF COLLEGE MANOEUVRE SHEET



**LEGEND**

1. 10 ft. contour interval  
2. 10 ft. contour interval  
3. 10 ft. contour interval  
4. 10 ft. contour interval  
5. 10 ft. contour interval  
6. 10 ft. contour interval  
7. 10 ft. contour interval  
8. 10 ft. contour interval  
9. 10 ft. contour interval  
10. 10 ft. contour interval

Scale: One inch to one mile - N.Z. map  
The vertical interval between contour lines is 100 feet

**REFERENCE**

1. 10 ft. contour interval  
2. 10 ft. contour interval  
3. 10 ft. contour interval  
4. 10 ft. contour interval  
5. 10 ft. contour interval  
6. 10 ft. contour interval  
7. 10 ft. contour interval  
8. 10 ft. contour interval  
9. 10 ft. contour interval  
10. 10 ft. contour interval

Staff College,  
Palmerston North,

IN YOUR REPLY

G1/1/4

please quote this number.

4 Jun 42.

Dear John,

Do you think Army HQ could arrange for the following Officers to come and talk to my students on the subjects shown against their names?

Subject

- |   |   |
|---|---|
| (a) Brigadier Hurley,                                   | The organisation of the American Army.              |
| (b) The United States Air Attaché (?)<br>Nankeville (?) | His experiences at Pearl Harbour and in New Guinea. |

I could arrange to fit them in any day, at any time to suit them.

I feel that a visit from these Officers would be of great value, and in view of certain things that we know are happening in this country, I think the students here should know something about their cousins from across the water.

So be a good chap and lay it on for me.

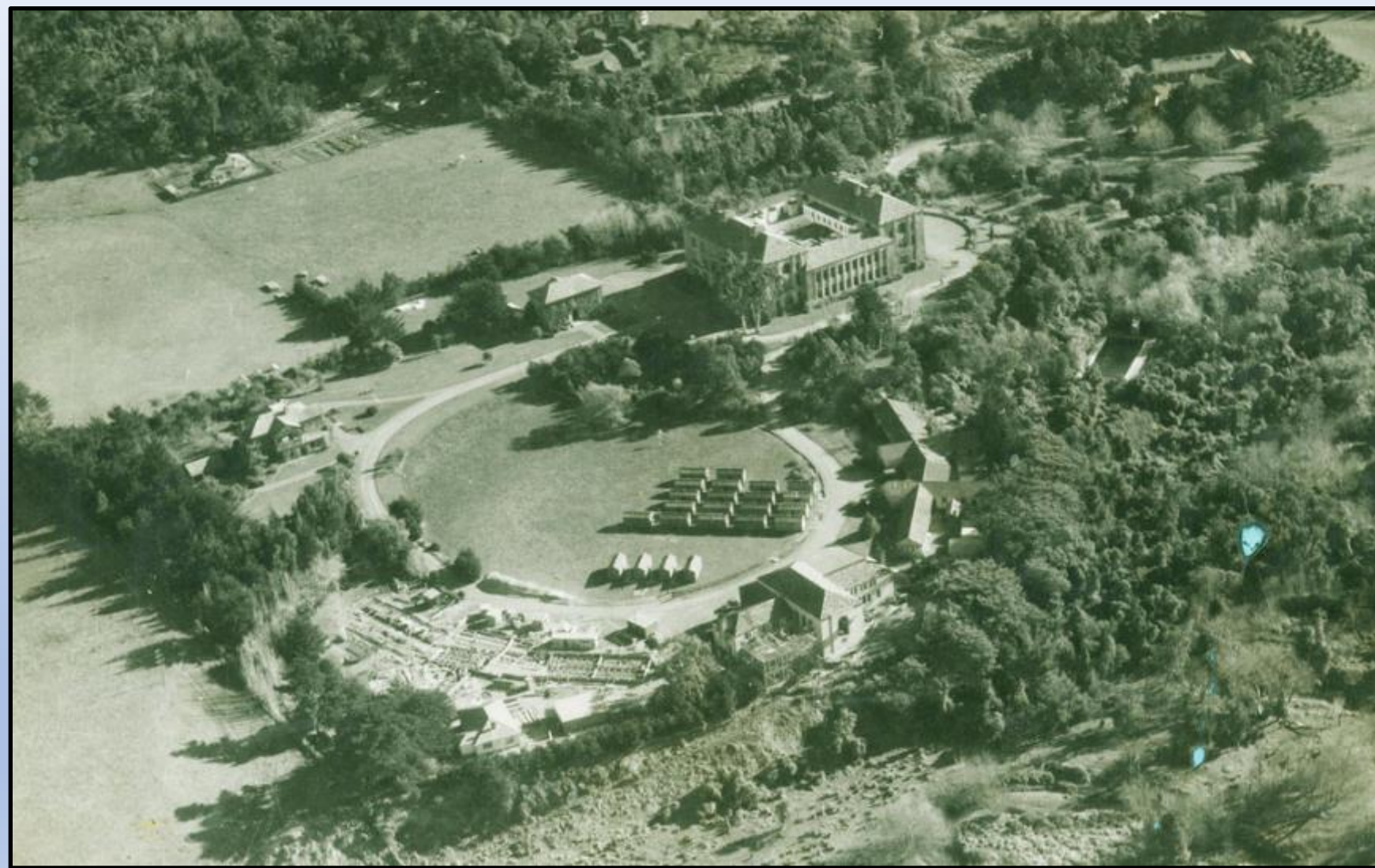
Yours ayn.

C. H. Hawke.



# CSC Student Huts and the Refectory Building. McHardy Hall (Pink Hostel)

foundations visible (began Apr 43)



- Massey Board offers Army:
- Main building:
  - Lecture rooms and some office space
- For Students:
  - Student hostel (next to Oval)
  - Refectory (which Army eventually takes over and feeds Massey students)
- Pink Hostel/ McHardy Hall accommodation becomes necessary to build
- Army pays £50 per month for Massey facilities, offset by purchases from Massey farm
- Hawkins selects Caccia Birch House for Staff College staff (approx 47 eventually)



# Facilities: McHardy Hall/ Pink Hostel (opened late 1943)



- Food and lodging
- Catering
- Defence contract rates
- Army to purchase surplus off the College's farm
- Class room facilities





# Staff Facilities: Caccia Birch House (but not Wharerata)

- Kitchen, accommodation and dining for Staff College staff
- Significant renovation of kitchen, dining room and improved electrical reticulation
- Septic tank and sewerage connections upgraded
- Wooden huts constructed for additional staff accommodation
- Sep 42: Requests to extend the half acre vegetable garden to 2 ½ acres
- Vacated in March 1944





# Closure

- Massey enrolments began to increase by mid 1943; strain on facilities
- Need for a staff college passed by early 1944; no longer a demand for courses, most staff completed
  - More than **500 officers** attended an Army Staff College course there
- Commander NZ Mil Forces LTGEN Puttick directs closure 4 March 1944
- Much of the Staff College accommodation and facilities, including furnishing and equipment from Caccia Birch House, are turned over to Massey.

From LTGEN E Puttick, Comd NZ MIL Forces to the Minister of Defence, 14 Feb 44:

“[The Staff College] played a very prominent and successful part in the higher training of officers, both for the 3<sup>rd</sup> Division and the Home Defence Forces. 3<sup>rd</sup> Division now have sufficient trained staff officers for their estimated requirements during 1944... the staff college training is no longer necessary... I therefore propose to close the College as soon after 4<sup>th</sup> March [1944] as possible...”

# Today

- Army Grade 2 and 3 Staff and Tactics Courses: NZ Army Tactical School (also various corps related schools)
- Command and Staff: NZDF Command and Staff College, Trentham Camp
  - RNZAF Staff College 1950- 2001
  - NZDF Command and Staff College since 2002
  - Number 63 Advanced Command and Staff Course (Joint) is underway
- Massey University Centre for Defence and Security Studies

NZDF CSC Advanced Course, Dec 2020

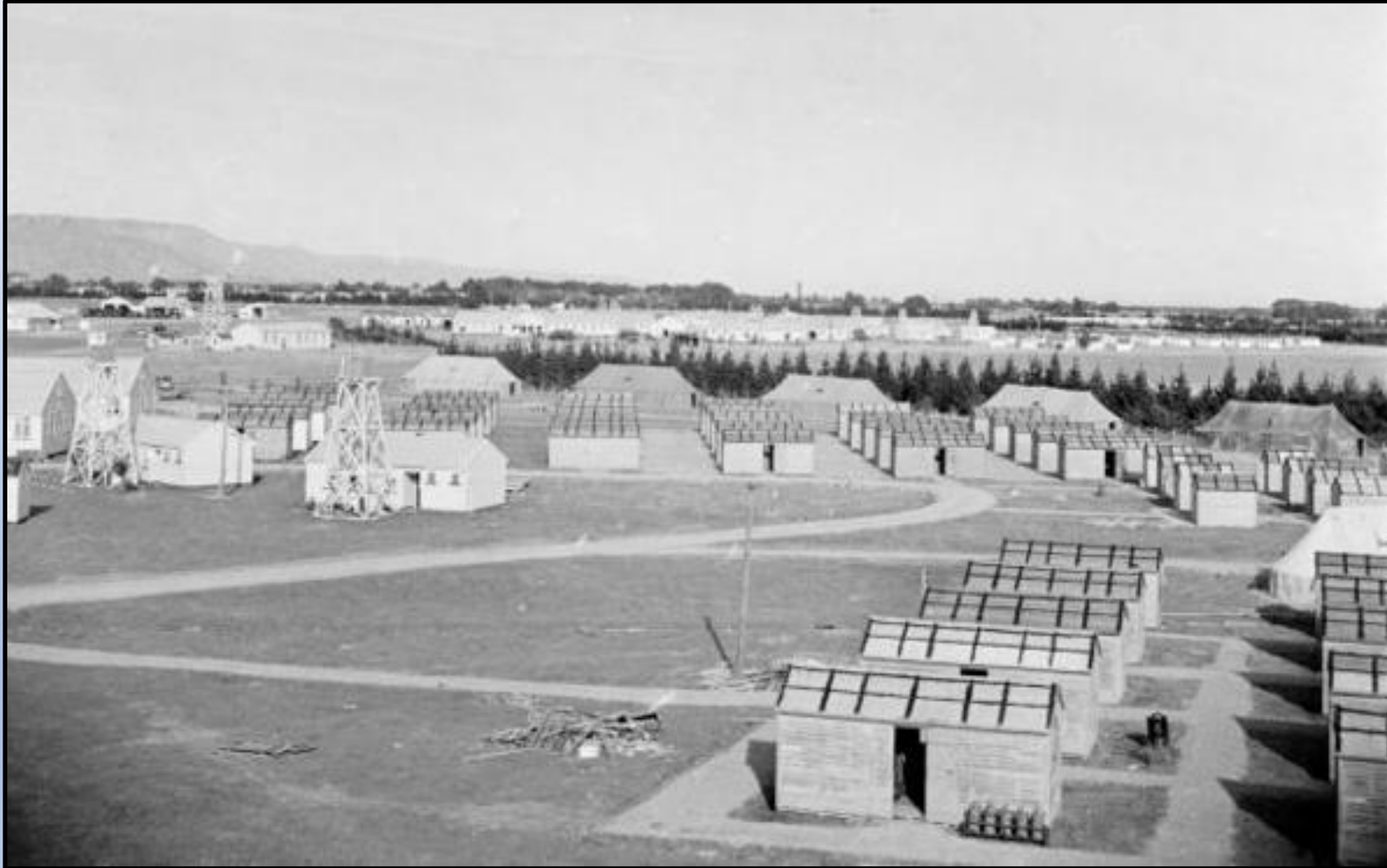


Army Staff and Tactics students, 2021





# Linton Military Camp (Camp Kairanga, Camp Whitmore)

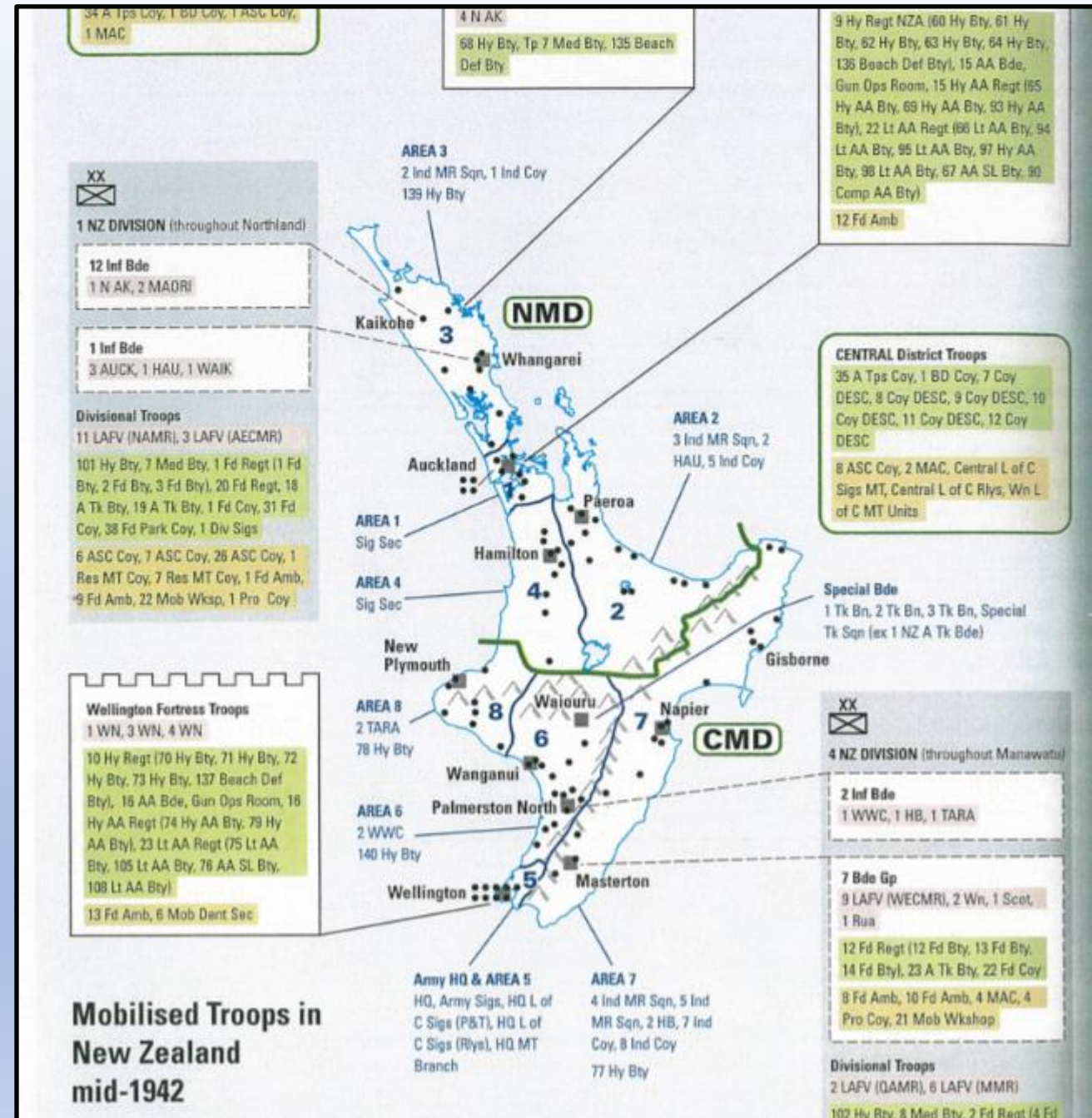


Linton Military Camp, 29 June 1950

# The need identified

- GEN Williams recommends Brigade Group strength forces for DONZ.
- Formations and fortress troops the length and breadth of the country
- To train NZEF and Home Guard
- Creates: Army Schools (Trentham), Sch of Armour (Waiouru), Artillery (Wellington), Mountain warfare (Waiouru), Tactics (Wanganui), Staff College (Waiouru) and **Linton Camp for 4-5,000 men of 2 Infantry Brigade Group**

Map Credit: Peter Cooke & John Crawford, *The Territorials...*, Random House New Zealand, 2011, p. 274.



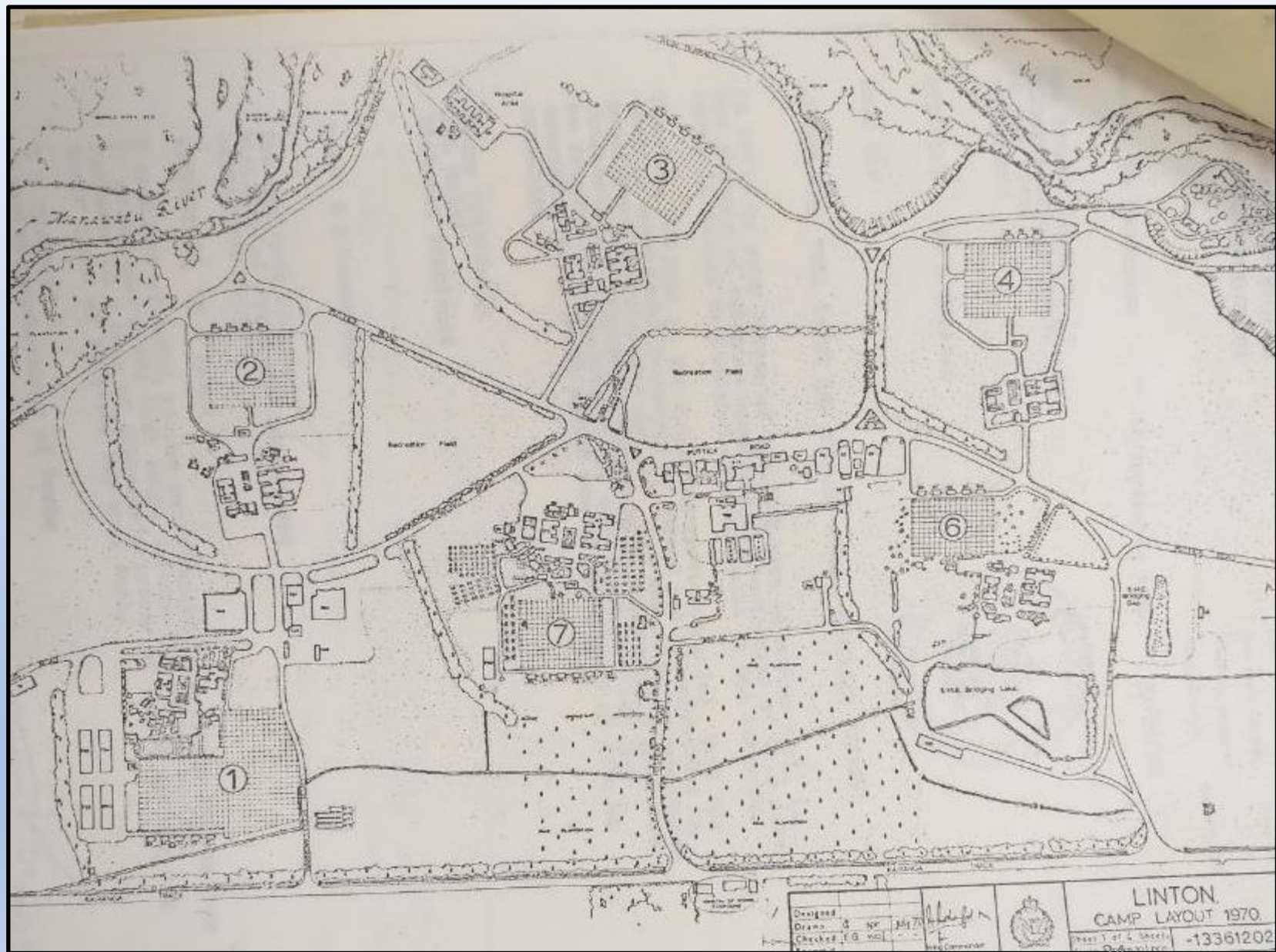


# Construction

- 13 Jan 42: Land taken under Public Works Act
- Works commenced Feb 42. First unit, 2 Field Regiment (artillery) occupies in Feb 42, under canvas.
- 700 acre site. 450 acres of stumps cleared.
- 9 Blocks intended, 7 built
- PWD camp (8<sup>th</sup> block) erected adjacent, but separate
- Seven battalion areas;
  - Accommodation: portable huts or under canvas
- Work mostly completed by Nov 42.
- 168 PWD and 479 contractors working on site
- Railway access to Linton Station (upgraded for military traffic)
- 25 yard rifle range on the banks of the Kahuterawa Stream (former gravel pit)
- 1943 Cost: £642,229 (including £400,000 on buildings)
- By Mar 44: 50 bed hospital, nurses home, theatre, wet and dry canteens, post office, library, magazines, ordnance and QM stores and a workshop



- Early occupants:
- Feb 42: 2 Field Regiment (tents)
- Sep 42: 1 Hawkes Bay Battalion occupies Block 4
- Nov 42: 1 Ruahine Regiment occupies Block 2, 1 Scottish Regiment into Block 3





# Linton Military Camp 10 Apr 43



# Linton Accommodation circa 1942



Two man hut with current barrack accommodation in the background, 2022

Qty	Size	Beds
521	2	1042
155	4	620
480	8	3840
		5502



Interior of an eight man hut

Pre-fab huts sent by rail to Tokomaru then transport to camp for construction



# Evolution of Linton

- 2 Brigade (Home Guard)
- Territorial Force
- Central Military District Training Unit (CMDTU)
- Compulsory Military Training (CMT) 1950-1958
- National Service (NS) 1961- 1972
- 1978: Land Force Command TFRs:
  - 2 TFR (Linton)
  - OP KUPE 1989
- 1990: Ready Reaction Force (and IEF)
- 2<sup>nd</sup> Land Force Group
- 1<sup>st</sup> (NZ) Brigade

C.M.D.T.U. BLOCK 7 LINTON M.C.

ORDER FOR INTAKE DRAFT MONDAY 3rd. MAY 1943

The following will arrive at Linton Camp Siding on Manday 3rd. May 1943 :-

AT 0455 HOURS.

<u>Serial No.</u>		<u>Officers.</u>	<u>O.R's.</u>
1	ARMoured CORPS (part Draft)	6	94
2	TANK TRANSPORTER (part draft)		18
3	INFANTRY ex Ngaruawahia	19	
	ex Waikouru	<u>50</u>	69
4	MAORI	2	132
		<u>8</u>	<u>313</u>

AT 0610 HOURS.

6	ARMoured CORPS (Balance)	14	2
7	TANK TRANSPORTER (Balance)	2	82
		<u>16</u>	<u>321</u>

SERIALS 1 & 6 (Armoured Corps)      MONDAY 3/5/43.

The Armoured Corps now in Camp will take charge on arrival and march to quarters in Block 7, distribute baggage, and proceed to breakfast under arrangements between Squadron Q.M's and R.Q.M.S. of C.M.D.T.U

Mon.3/5      1030 hours. Parade -all ranks- "C" Mess Room Block 7 -RECORDS.  
do      1400 do      Parade -C Mess Room- fill Balliasses.

# Video Clip: CMT Recruits 1950

- <https://teara.govt.nz/en/video/35715/compulsory-military-training-recruits-1950>





Linton, 29 June 1950: 18 year old CMTs arrive



Linton, 29 June 1950, CMT trainees in junior ranks mess





Linton, 29 June 1950, civilian staff, Junior ranks mess



Linton, 29 June 1950, CMT Training





Foxton, 8 Aug, 1950

4<sup>th</sup> Intake CMT,  
Linton, 1951





# Some other occupants

- RNZAF Station Linton: Apr- Nov 43
- 3 Ground Training Depot. 500 recruits/ week.
- Base Commanders:
  - Apr- Aug 43: SQNLDR CN Rabone
  - Aug- Nov 43: WGCDR EG Gedge, MC



WGCDR Gedge at christening (right rear)

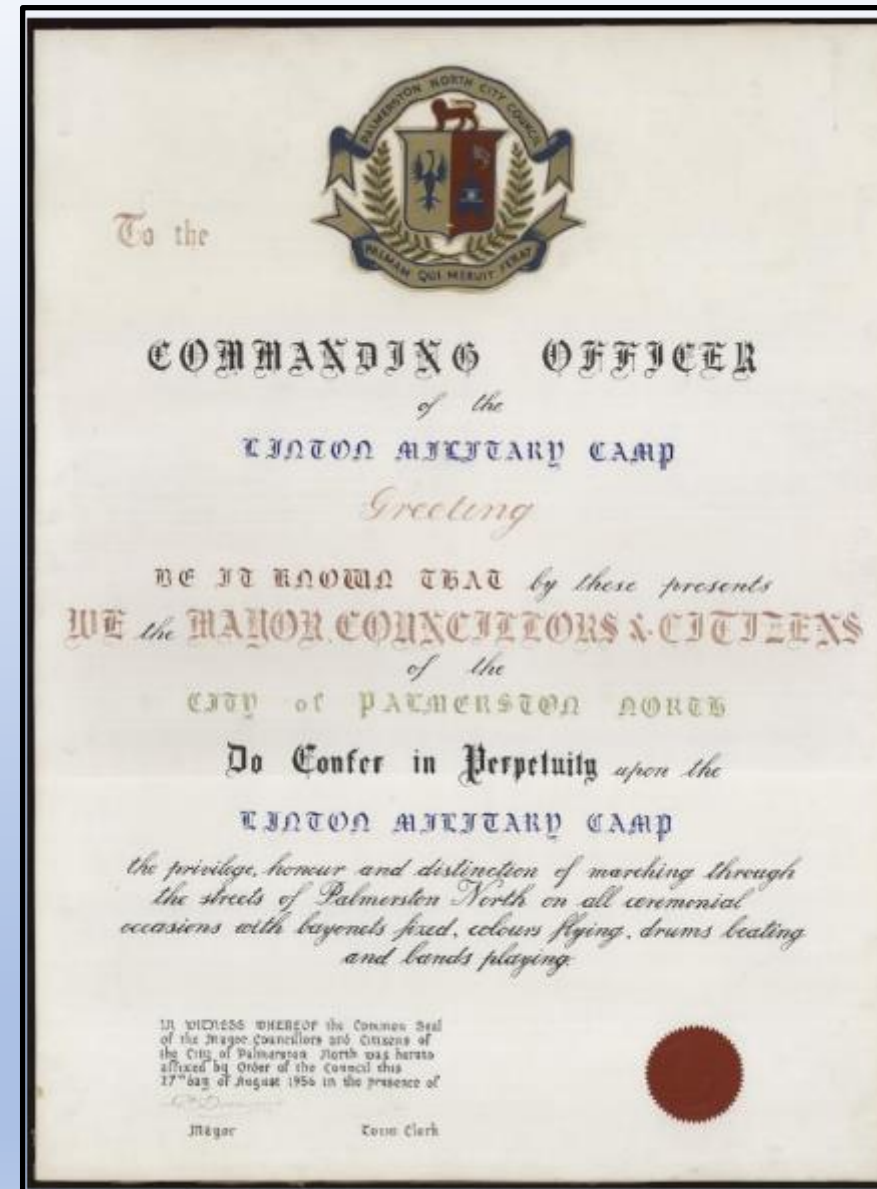


- Polish refugees 1949: After Pahiatua Polish refugee camp closed
- Block 5?



The youngest Polish children from the camp temporarily attended Marist Primary School, Palmerston North, and lived in the Linton Military Camp before relocating to the Hawera Polish Boys' Hostel for the final term of the school year, 1949.

**Back:** (l-r) Marian Sadowski, Krzysztof Dziegieć, Józef Jagiełło, Ludwik Głogowski.



The Mayor, Geoffrey Tremaine, Linton Freedom of the City Parade, 27 August 1956



School of Military Engineering (from 1953), followed by more corps schools, eventually

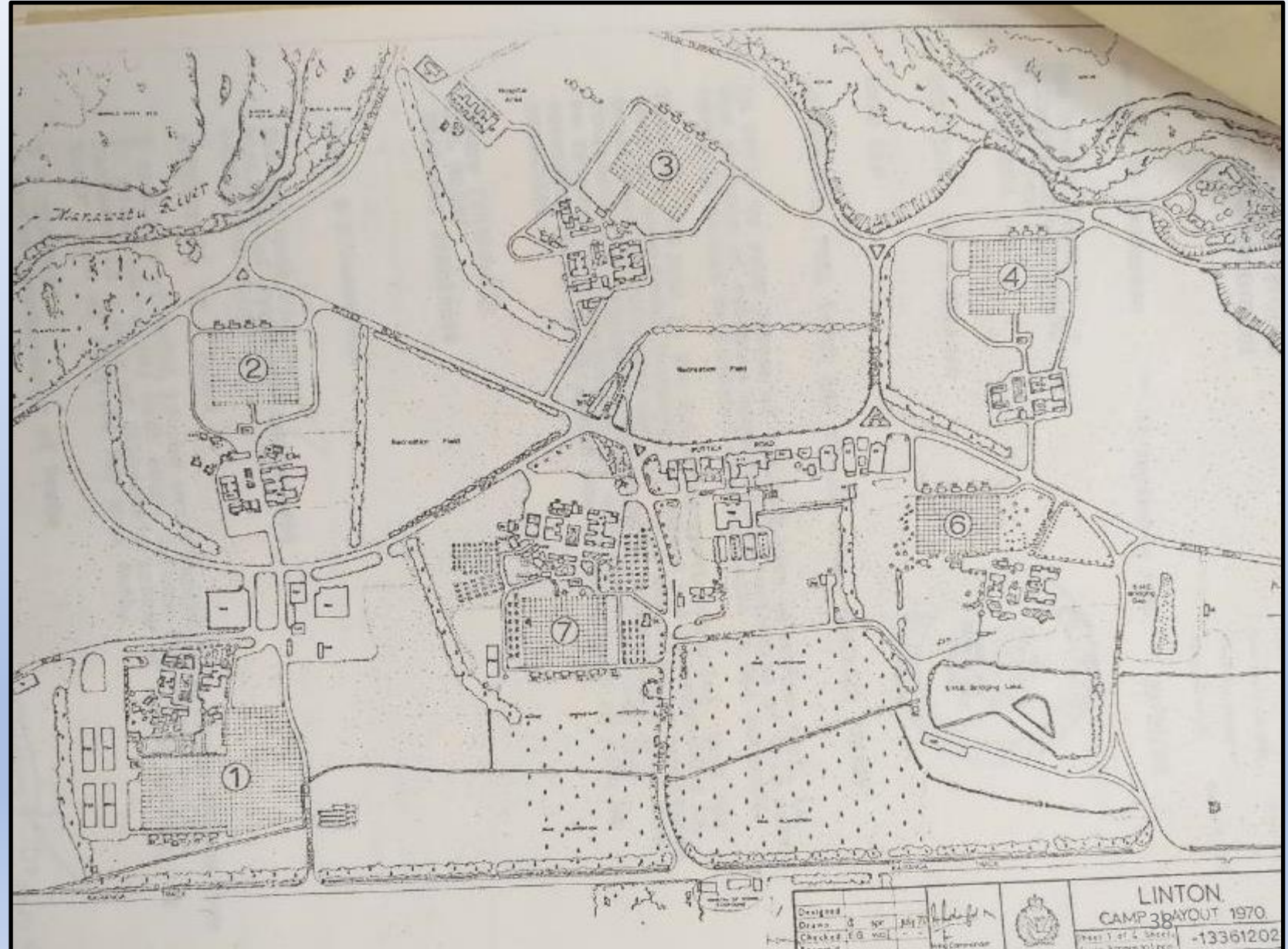


SME Engineer capability display, June 1975

# Linton Military Camp 1970

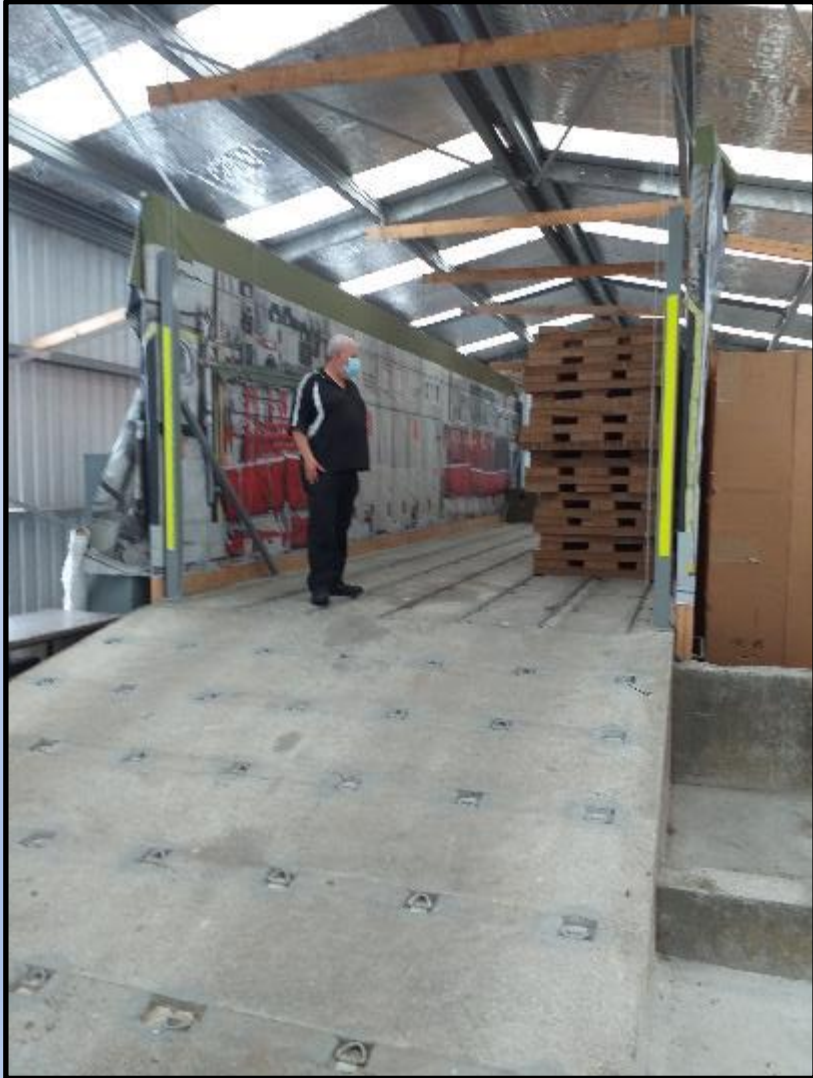
11 Dec 1970 report noted that:

- Blocks 3 and 4 are “quite suitable for large numbers under canvas, but many of the remaining facilities are in an off-maintenance state...”
- Block 3 used less than once p.a.; 5 x coy HQs, remaining ablution blocks and toilets “worth preserving.”





# C-130 Mock-up, 1978



C-130 Mock-up Linton, 2022

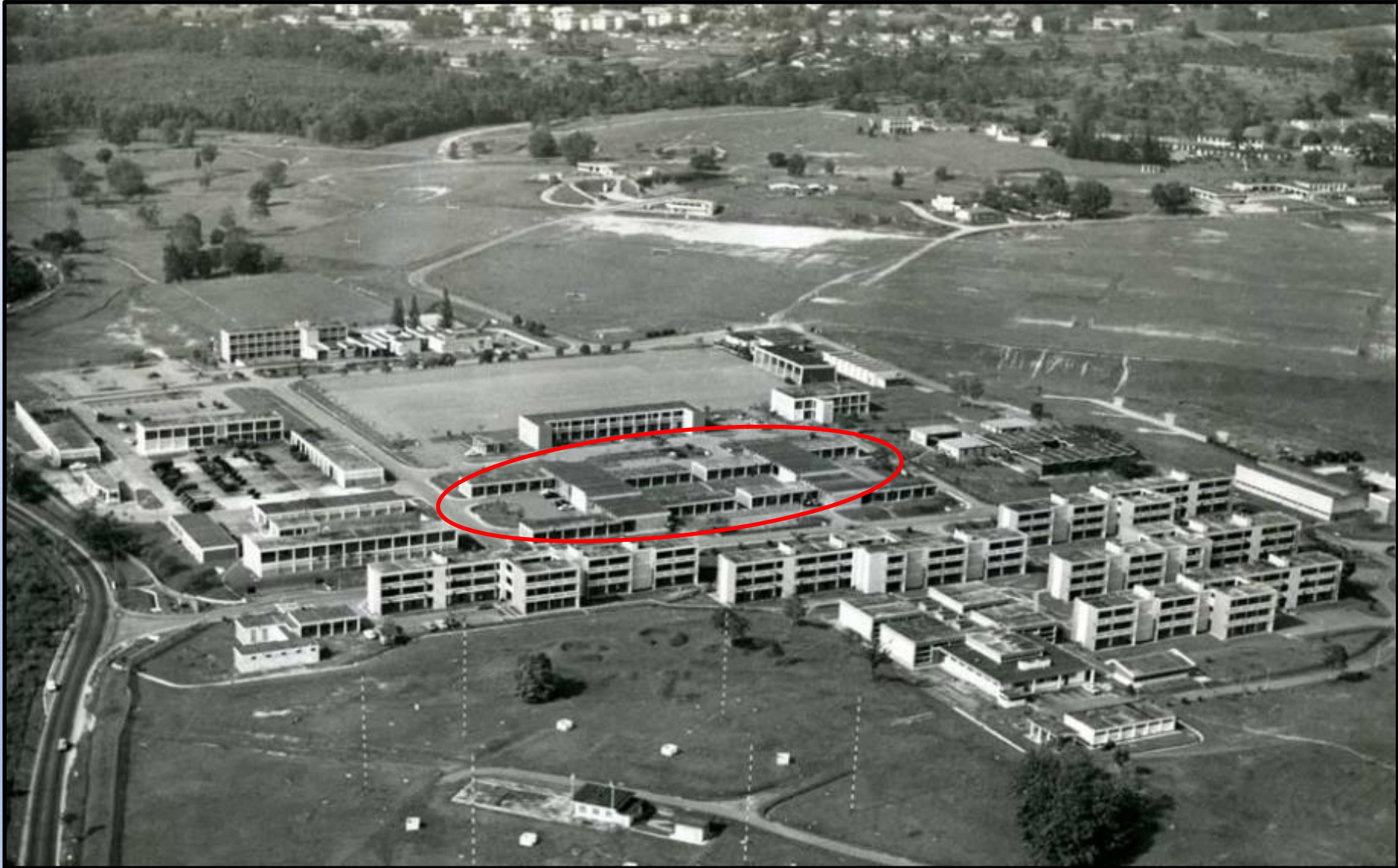


RNZAF Ex Skytrain 2021, Wanaka



C Company 1 RNZIR "Tac Loaded" in  
RNZAF C-130, Malaysia, circa 1985

# Op Kupe 1989; RTNZ of 1 RNZIR and NZFORSEA from Singapore



Dieppe Barracks, 1 RNZIR (and eventually RNZAF UH1H helicopter detachment), Singapore



# Linton 1953 versus today

- 1953:
- HQ NZ DIV
- HQ RNZ Artillery
- HQ 4 Armoured Brigade
- 2 Brigade Dental Section
- Linton Camp Hospital
- Central Districts Ordnance Depot(from PN Showgrounds in 1946)
- Central Districts Training Depot

- Today:
- HQ 1 (NZ) Brigade
- 16 Field Regiment
- Queen Alexandra's Mounted Rifles
- 2<sup>nd</sup> Engineer Regiment
- 1st (NZ) Signals Regiment
- 1<sup>st</sup> Battalion, RNZIR
- 2<sup>nd</sup> Combat Service Support Battalion
- 2<sup>nd</sup> Health Support Battalion
- 2<sup>nd</sup> Military Police Platoon
- C Company, 5/7 Regiment (Territorials)
- ....

- Today:
- TRADOC
- School of Artillery
- School of Military Engineering
- Combat School (Infantry and Armour)
- NZ Combined Training Centre
- Defence Driver Training School
- ...

Approx 1600 personnel, 1125 barrack bed spaces and 310 houses

# Summary: 1942-2022: Army SC and Linton, 80 years on

- Impact
- Relationship with Massey
- Sir Geoffrey Peren
- Linton relationship with Palmerston North and the Manawatu
- Evolution of Linton
- Evolution of Professional Military Education



Brigade level tactical exercise and wargaming,  
Mission Command Training Centre Linton, August 2021



# Some acknowledgements

- John Moremon, “The New Zealand Army Staff College at Massey Agricultural College during the Second World War”, in *The Manawatu Journal of History*, Issue 13, 2017, pp. 53- 62.
- Peter Cooke and John Crawford, *The Territorials: The History of the Territorial and Volunteer Forces of New Zealand*, Random House New Zealand, 2011.
- Massey University Archives and the university Tamiro website at <https://tamiro.massey.ac.nz/>