



**THE BOMBING OF  
MAINLAND JAPAN  
DURING WORLD  
WAR II BY THE  
UNITED STATES  
ARMED FORCES**



# THE BOMBING OF JAPAN BY THE USAAF IN WORLD WAR II

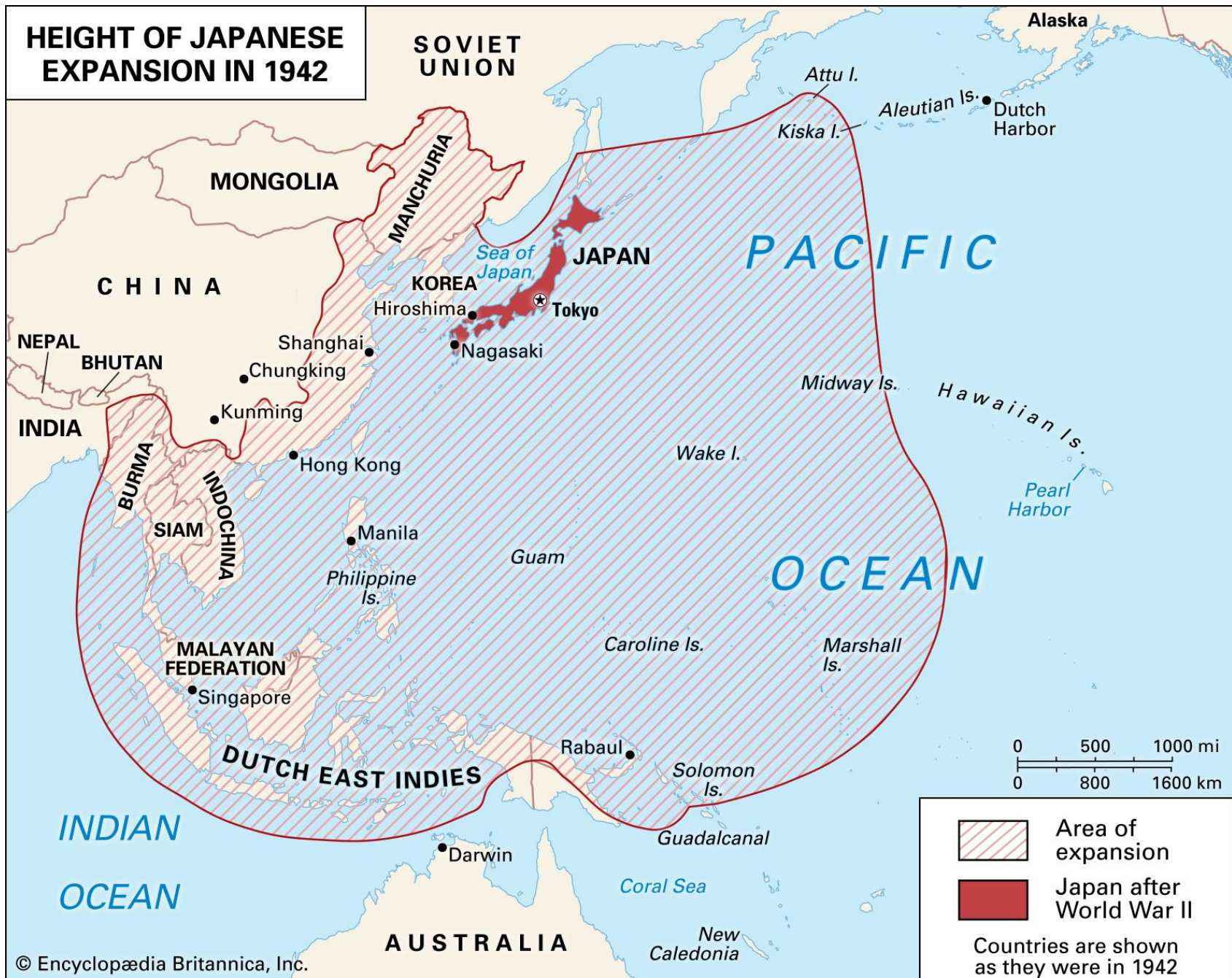


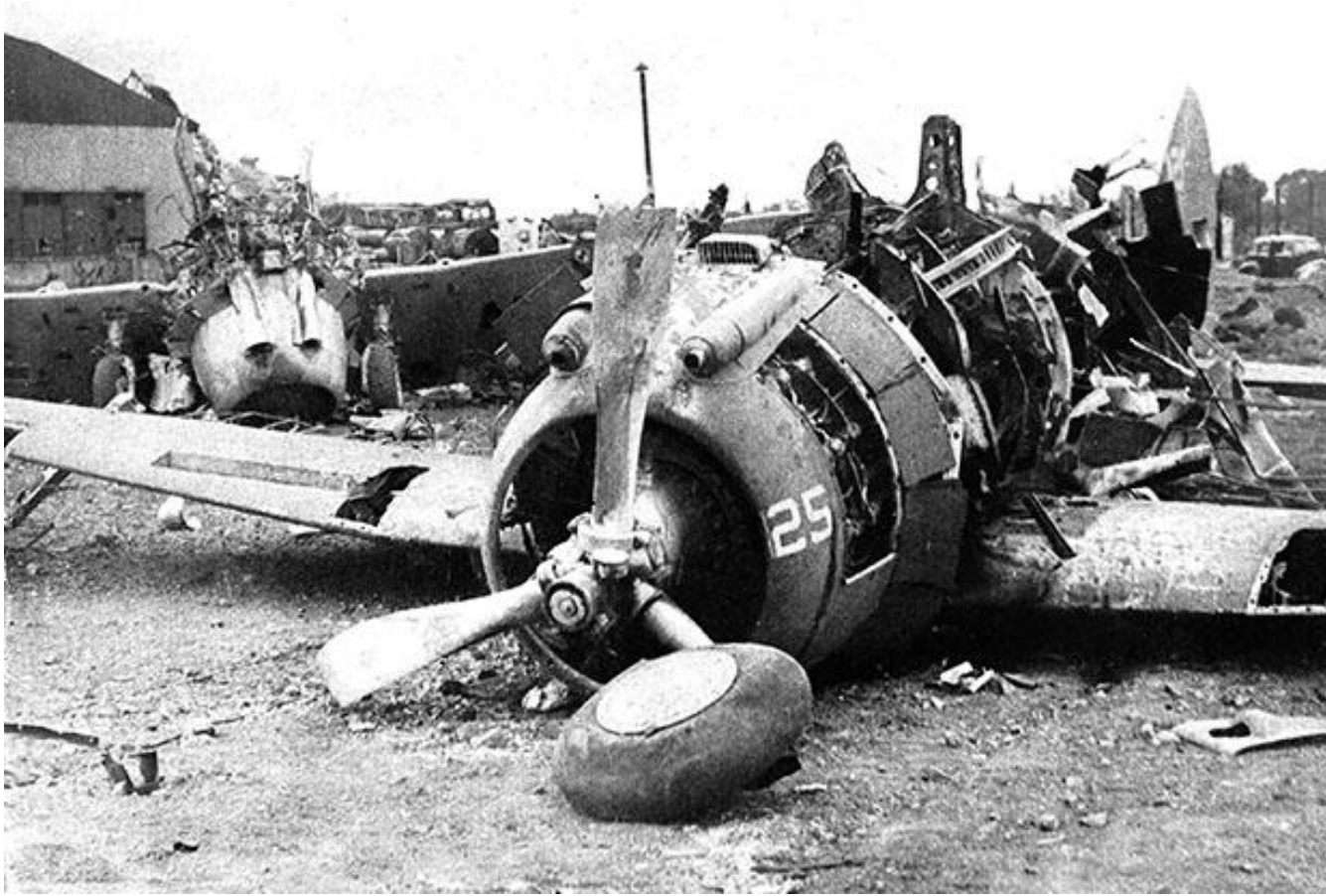


# **THE BOMBING OF PEARL HARBOUR, HAWAII ON DECEMBER 6<sup>TH</sup> 1941**



# HEIGHT OF JAPANESE EXPANSION IN 1942





**CLARKE AIRFORCE BASE OUTSIDE OF MANILA IN THE  
PHILIPPINES SHOWING AIRCRAFT DESTROYED IN  
JAPANESE AIR RAIDS**

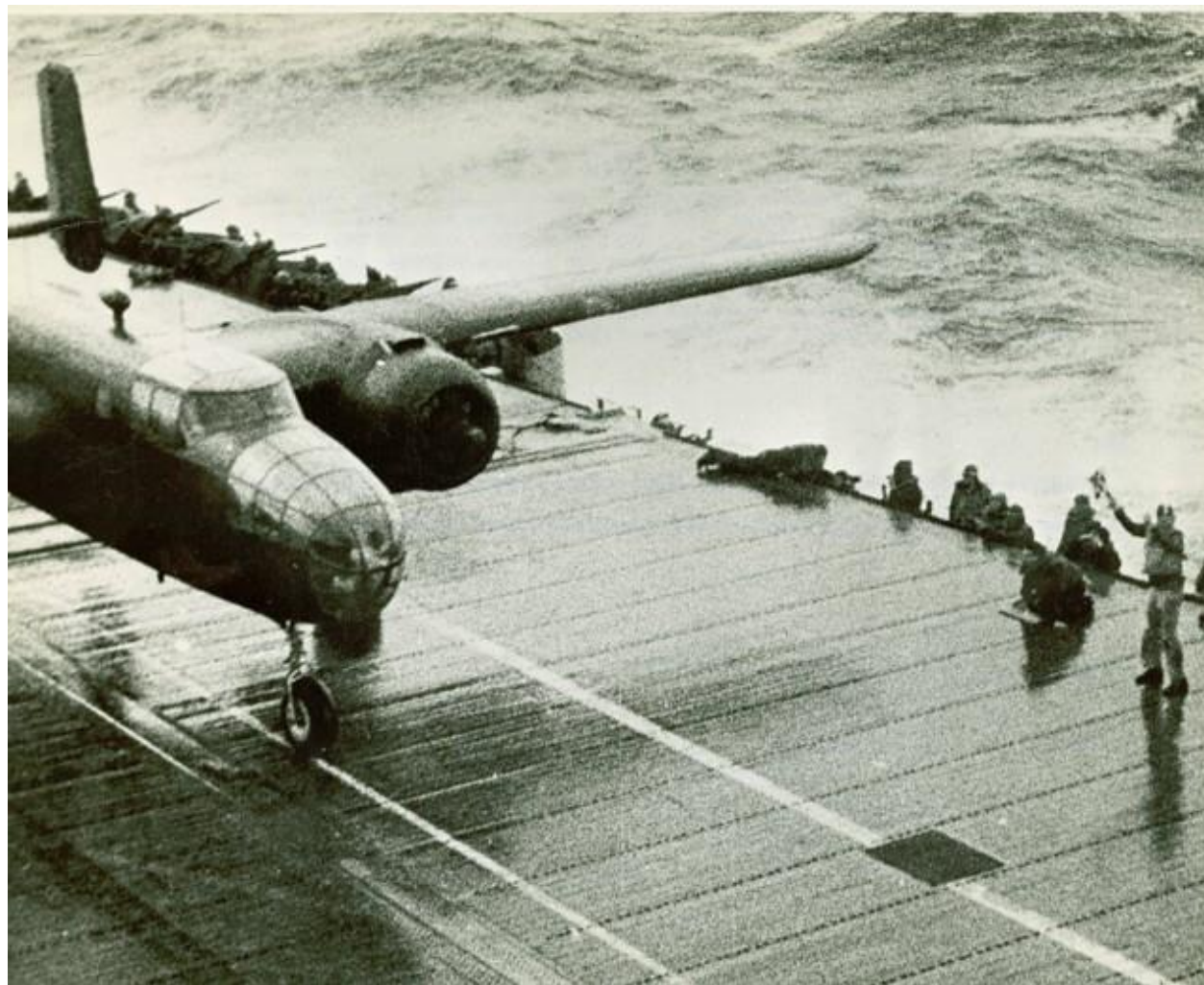
**THE DOOLITTLE  
RAID FROM USS  
HORNET ON 18  
APRIL 1942**

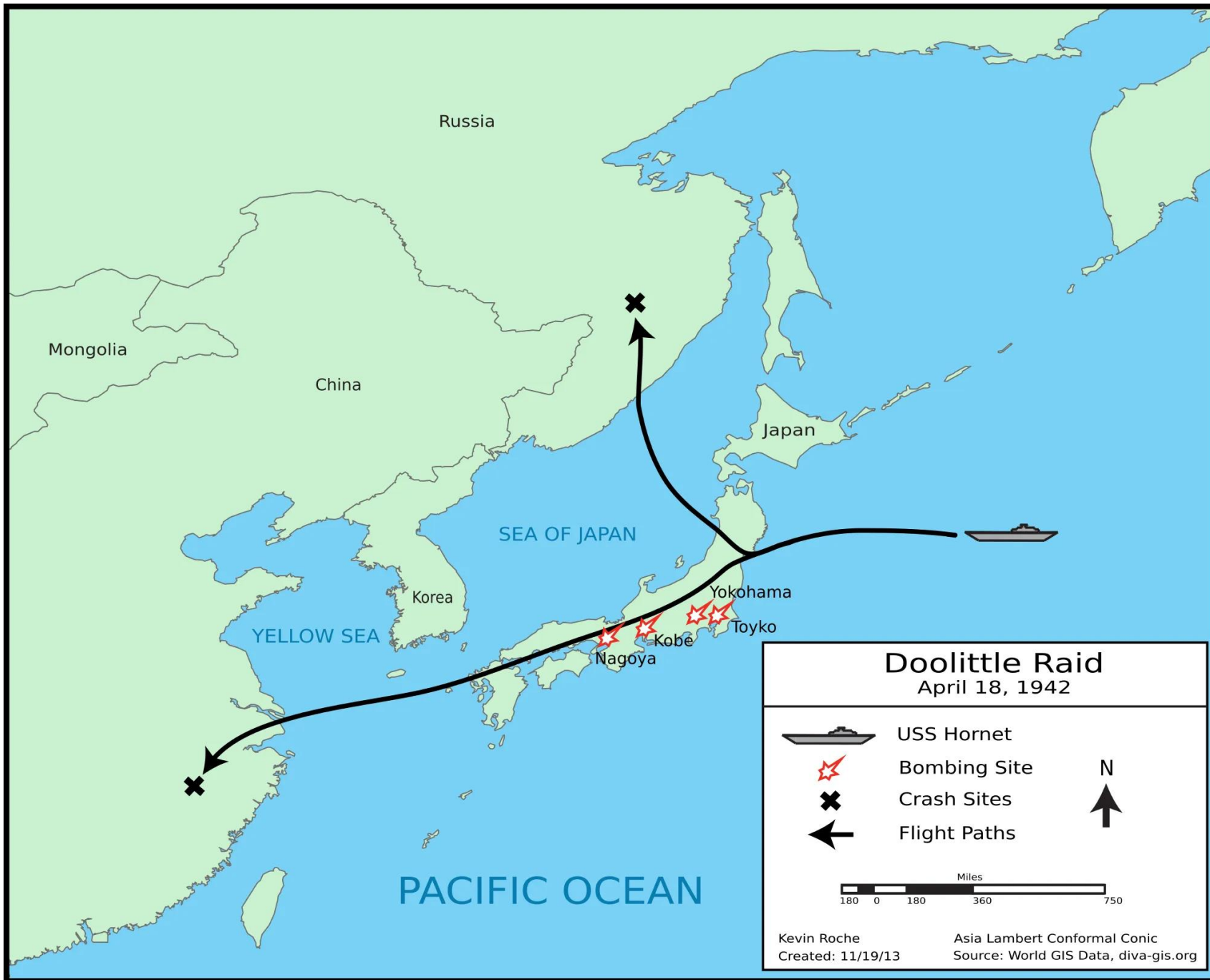






**LIEUTENANT COLONEL  
JIMMY DOOLITTLE USAAC**







# BOEING B26 SUPERFORTRESS





# THE BATTLE OF KANSAS

# THE US ARMY AIR CORPS 'BOMBER BARONS'



'HAP' ARNOLD



'TOOHEY' SPAATZ

IRA EAKER





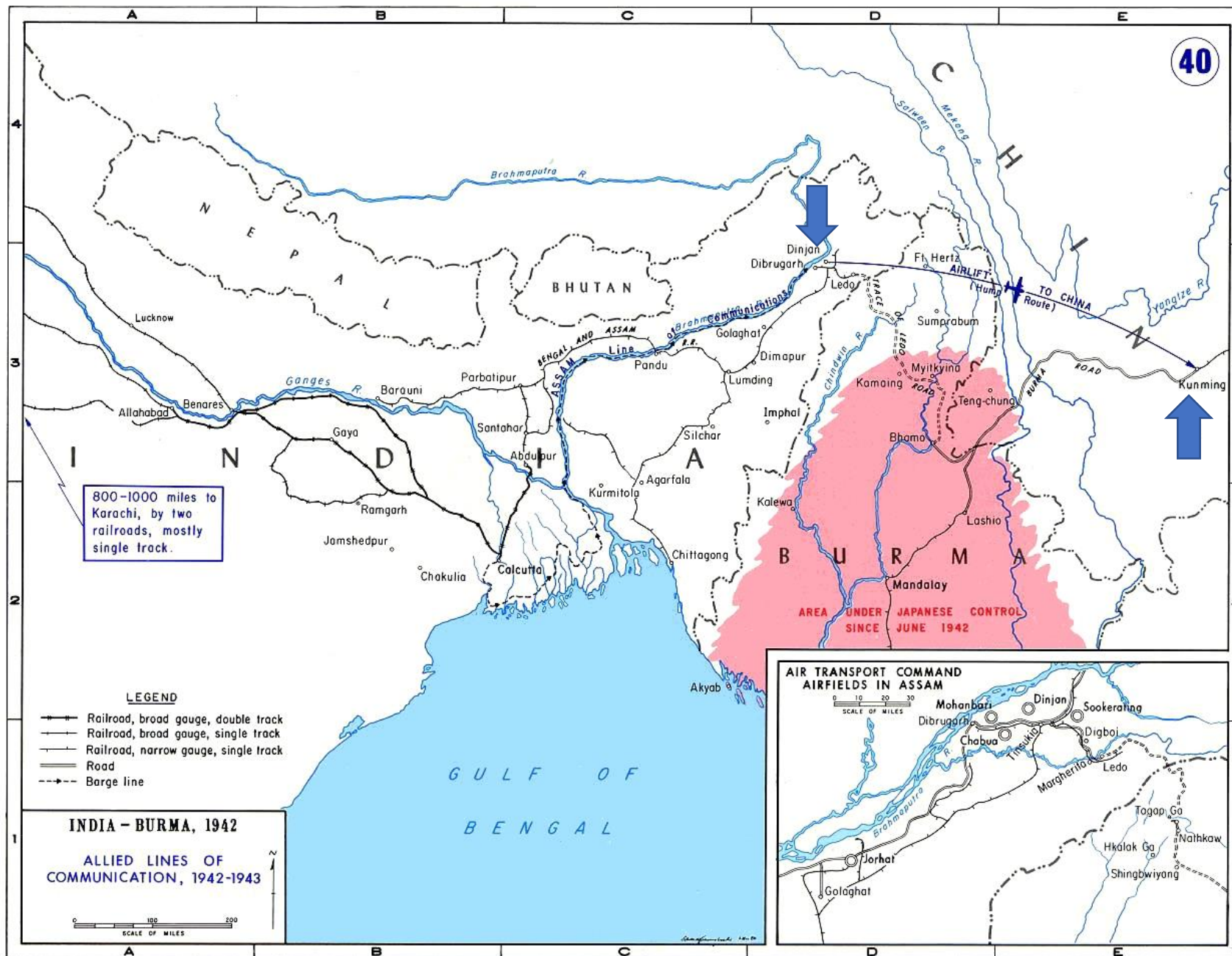
'POSSUM' HANSELL



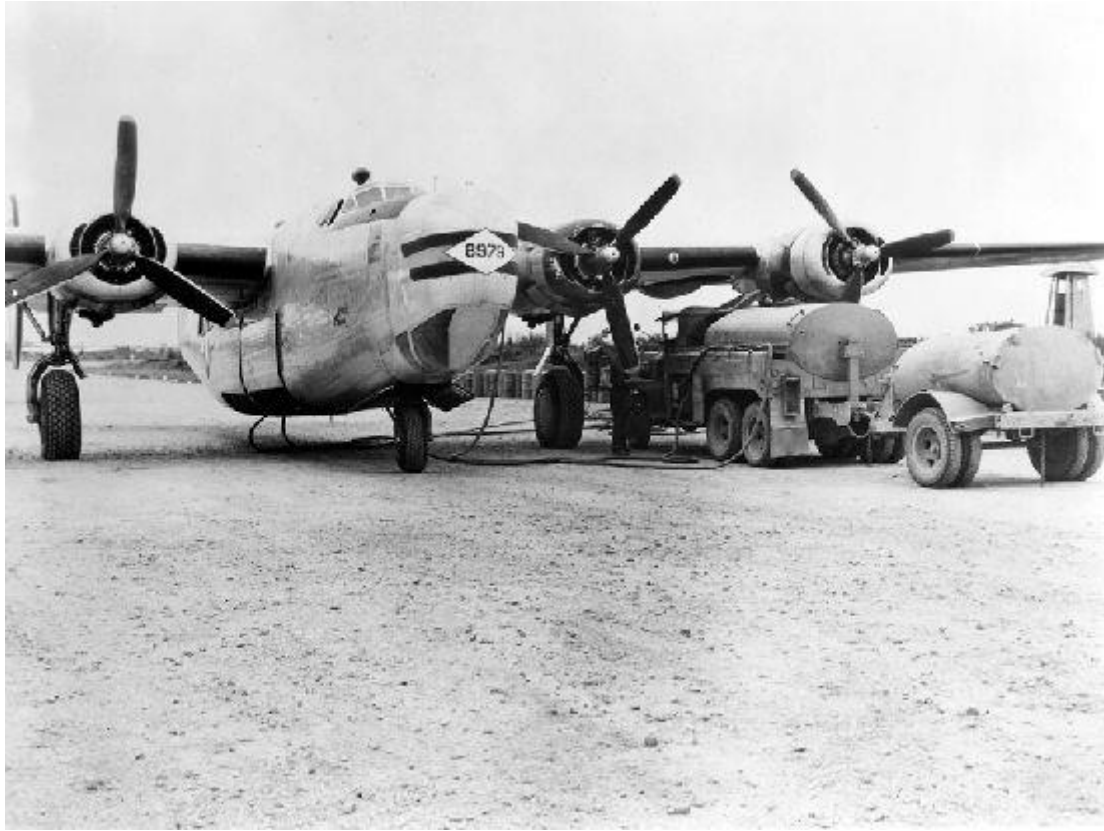
CURTIS LE MAY



'ROSIE' O'DONNELL



FLYING  
THE  
HUMP



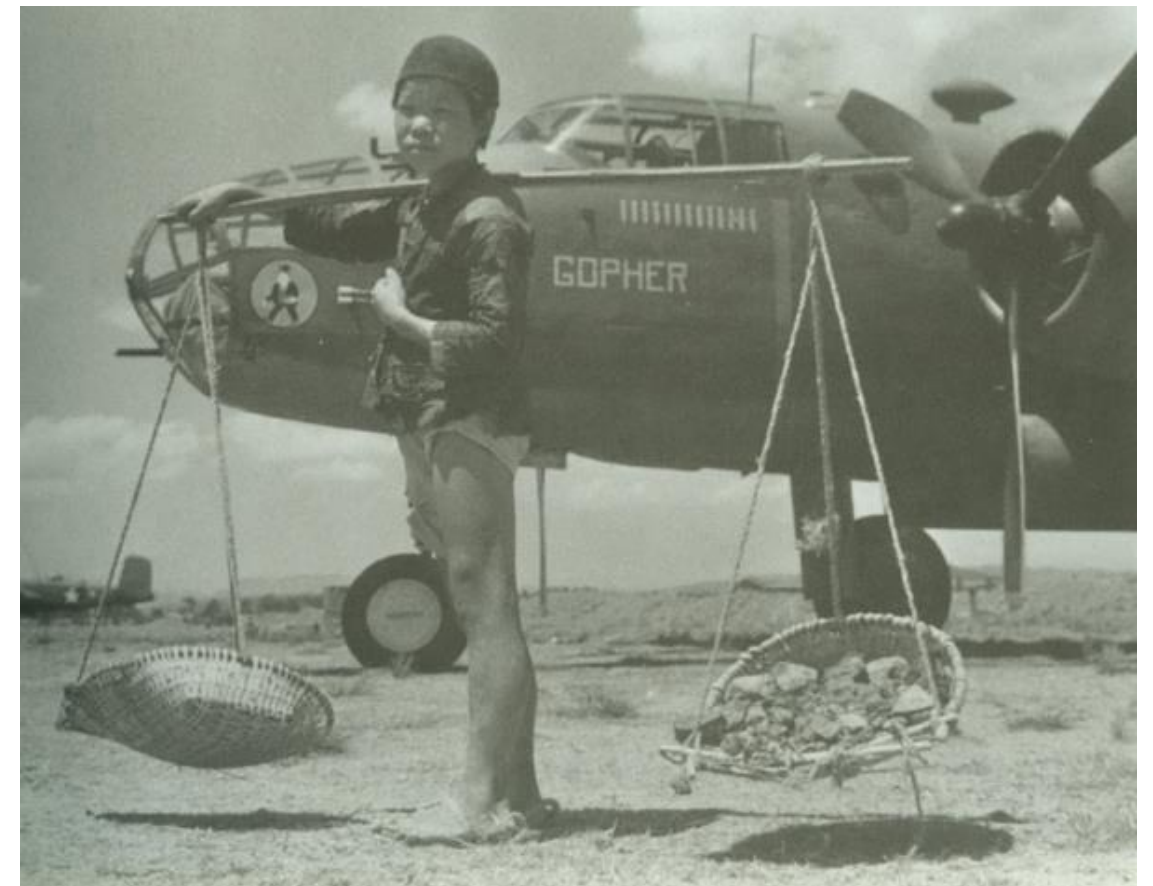
## THE AERIAL TANKERS FLYING 'THE HUMP'





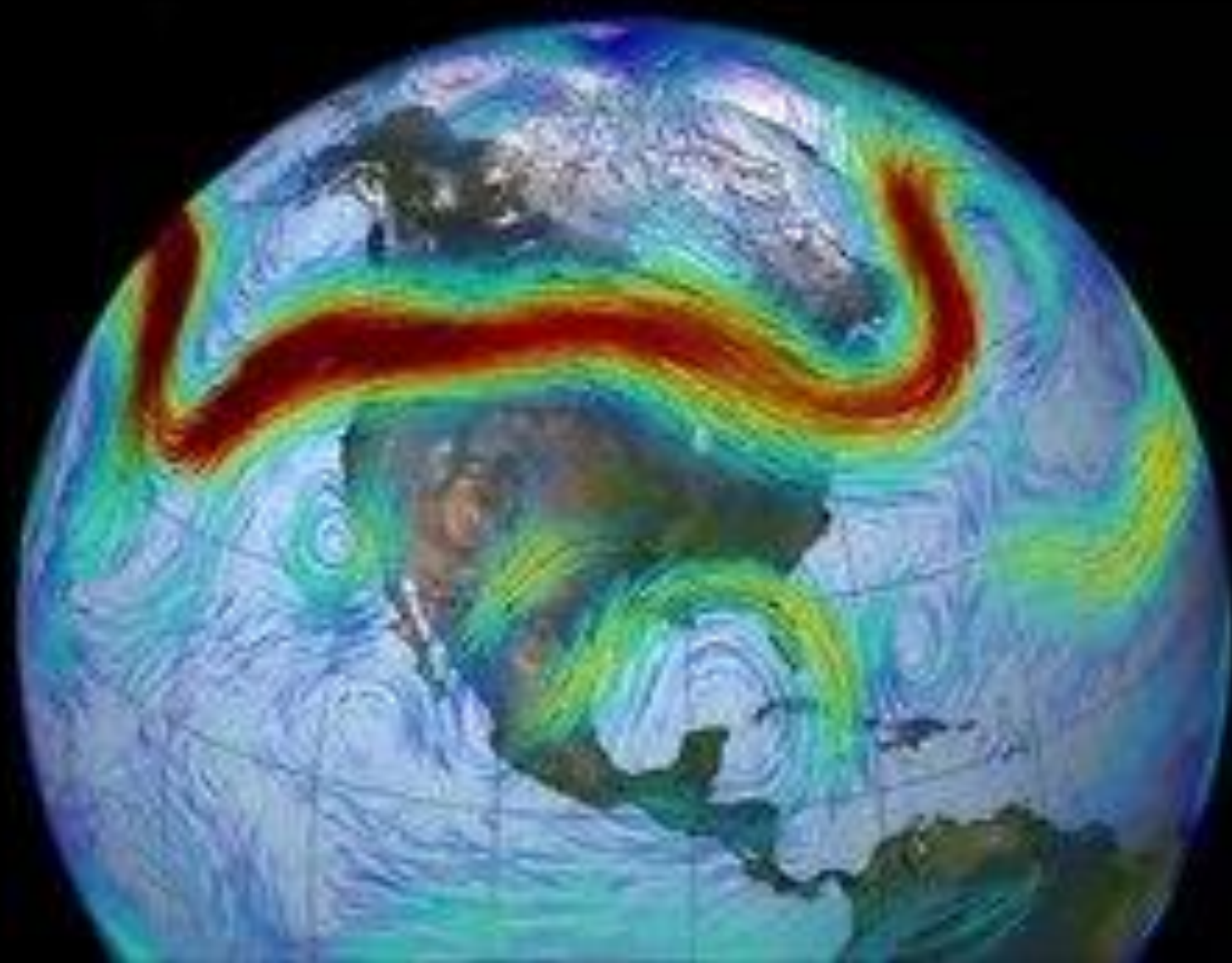


**FOUR AIRFIELDS WERE  
CONSTRUCTED IN CHINA ON WHICH  
TO BASE THE B-29s**



# SUPERFORTRESS' IN CHINA









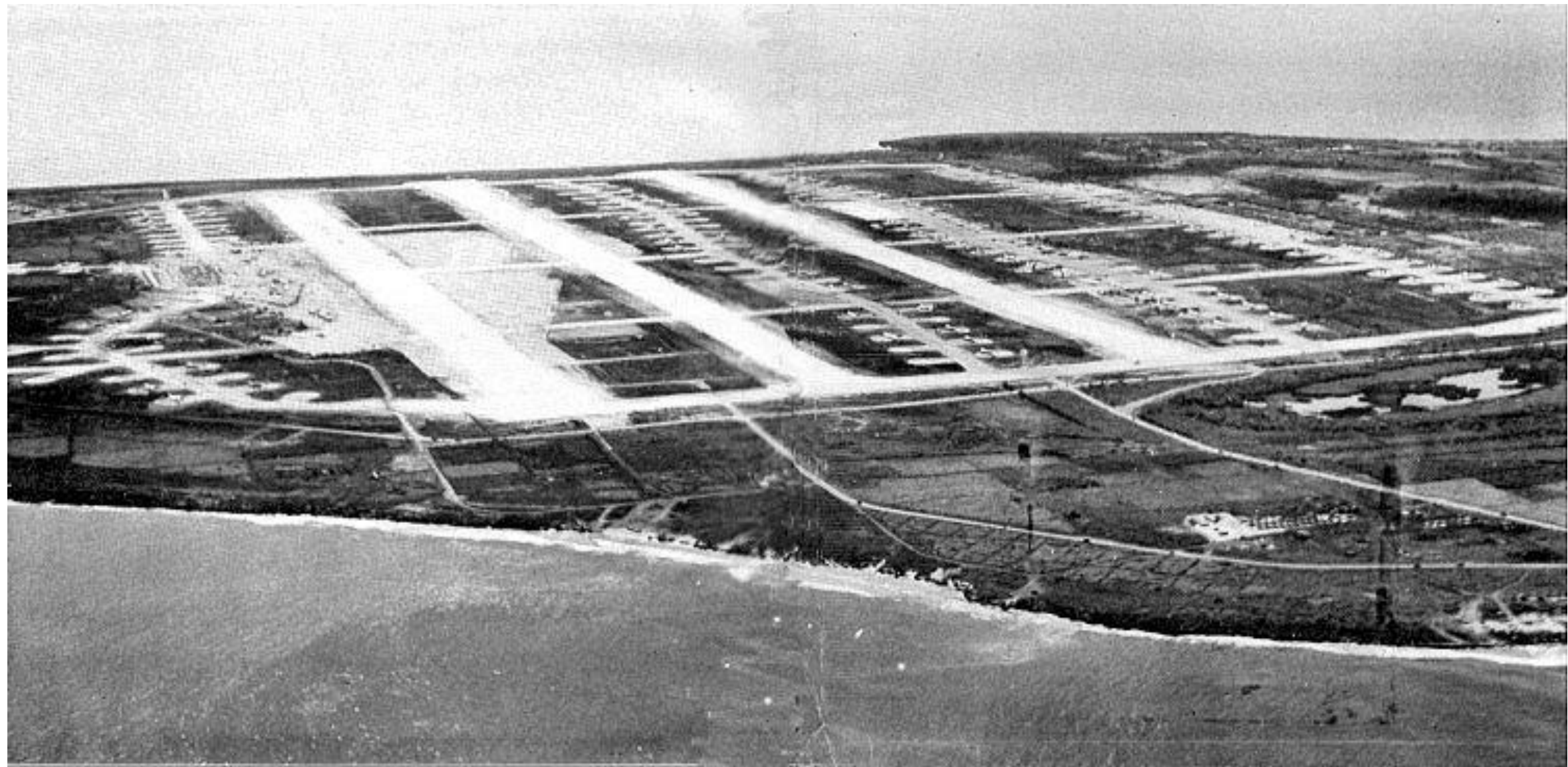
## THE NORTHERN MARIANA ISLANDS





**B29  
SUPERFORTRESSES  
ON ISELY FIELD,  
SAIPAN IN MID -  
1945**









**4 MARCH 1945 – B26 ‘DINAH MIGHT’ MAKES  
FIRST EMERGENCY LANDING ON SOUTH FIELD  
IWO JIMA**





**JUST MADE IT  
AS FAR AS  
IWO JIMA!**



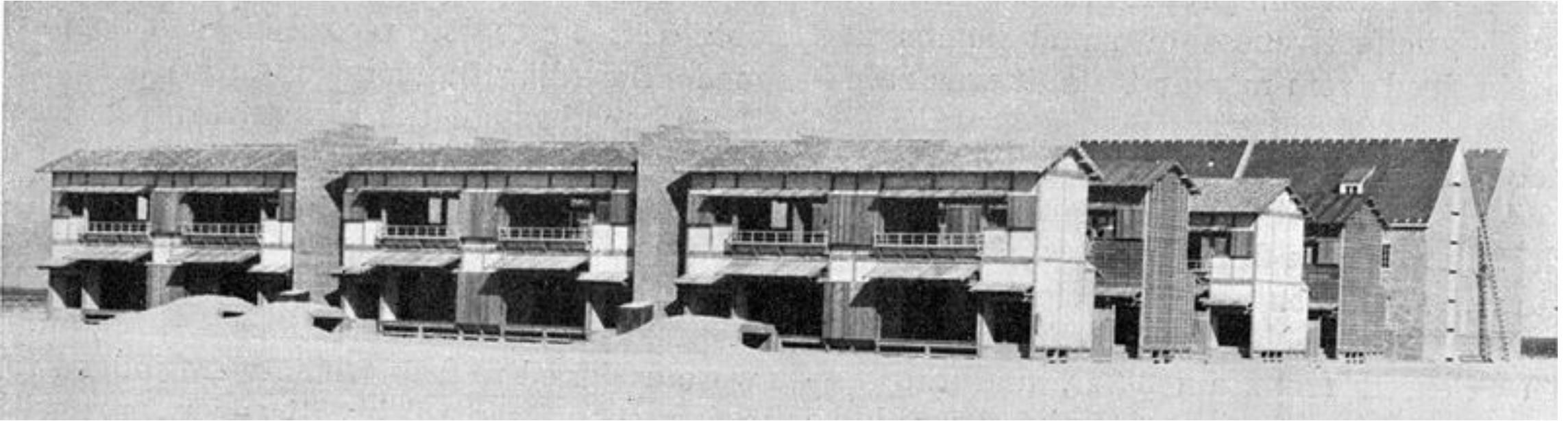


**MAJOR GENERAL  
'POSSUM' HANSELL  
(L) AND MAJOR  
GENERAL CURTIS  
'IRON ASS' LEMAY**

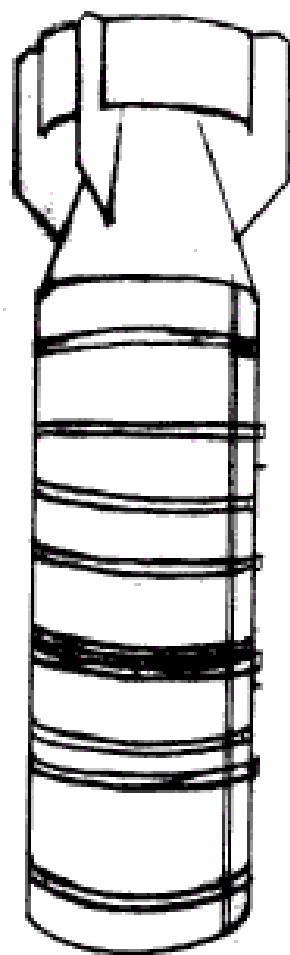




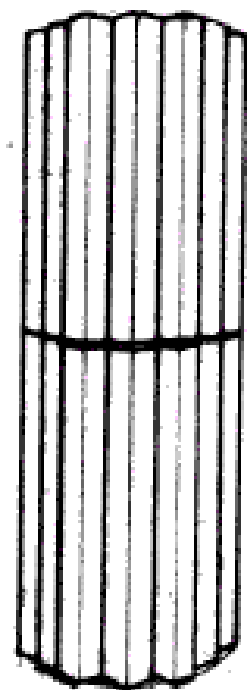
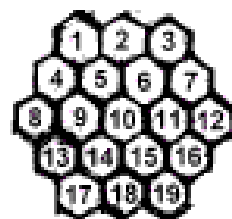
# **SUPERFORTRESS OVER JAPAN**



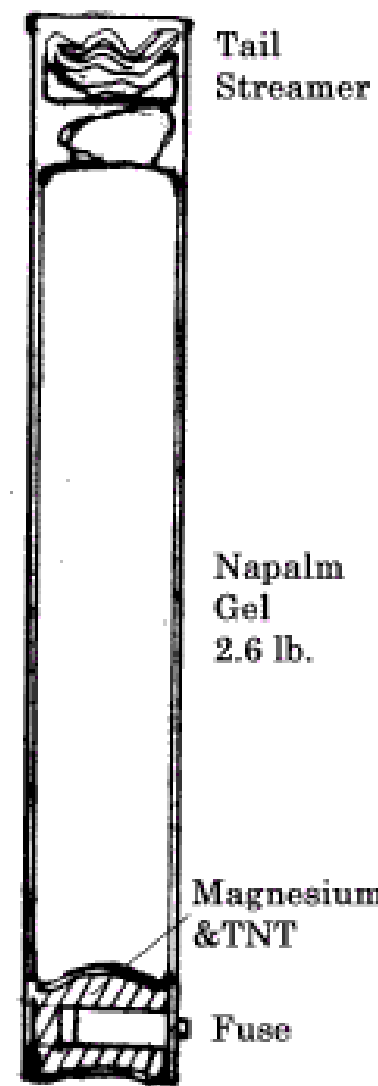
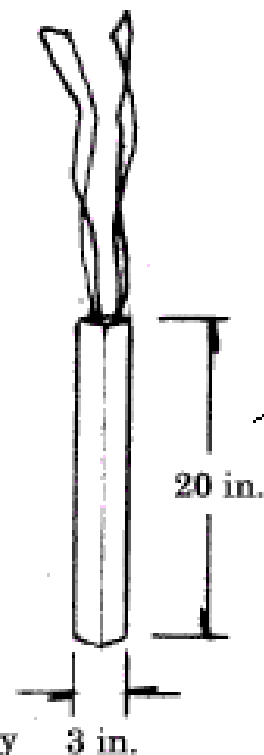
**‘JAPANESE VILLAGE’ WAS THE NICKNAME FOR A RANGE OF HOUSES CONSTRUCTED IN 1943 BY THE U.S. ARMY IN THE DUGWAY PROVING GROUND IN UTAH, ROUGHLY 100 KMS SOUTHWEST OF SALT LAKE CITY.**



500 lb.  
Cluster Bomb



38 M-69 Incendiary  
Bombs Inside



Tail  
Streamer

Napalm  
Gel  
2.6 lb.

Magnesium  
& TNT

Fuse











**TOKYO BURNING  
ON THE NIGHT OF  
MAY 26<sup>TH</sup> 1945**





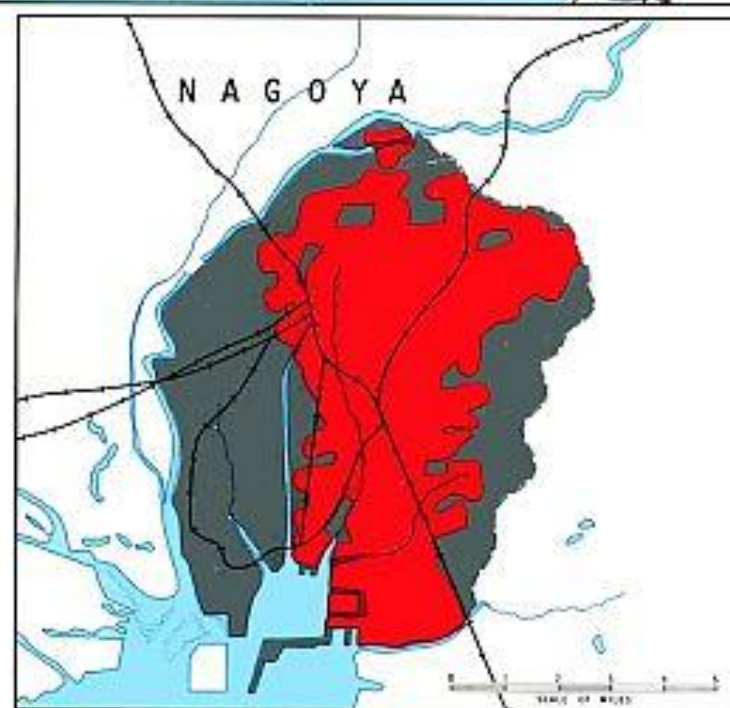
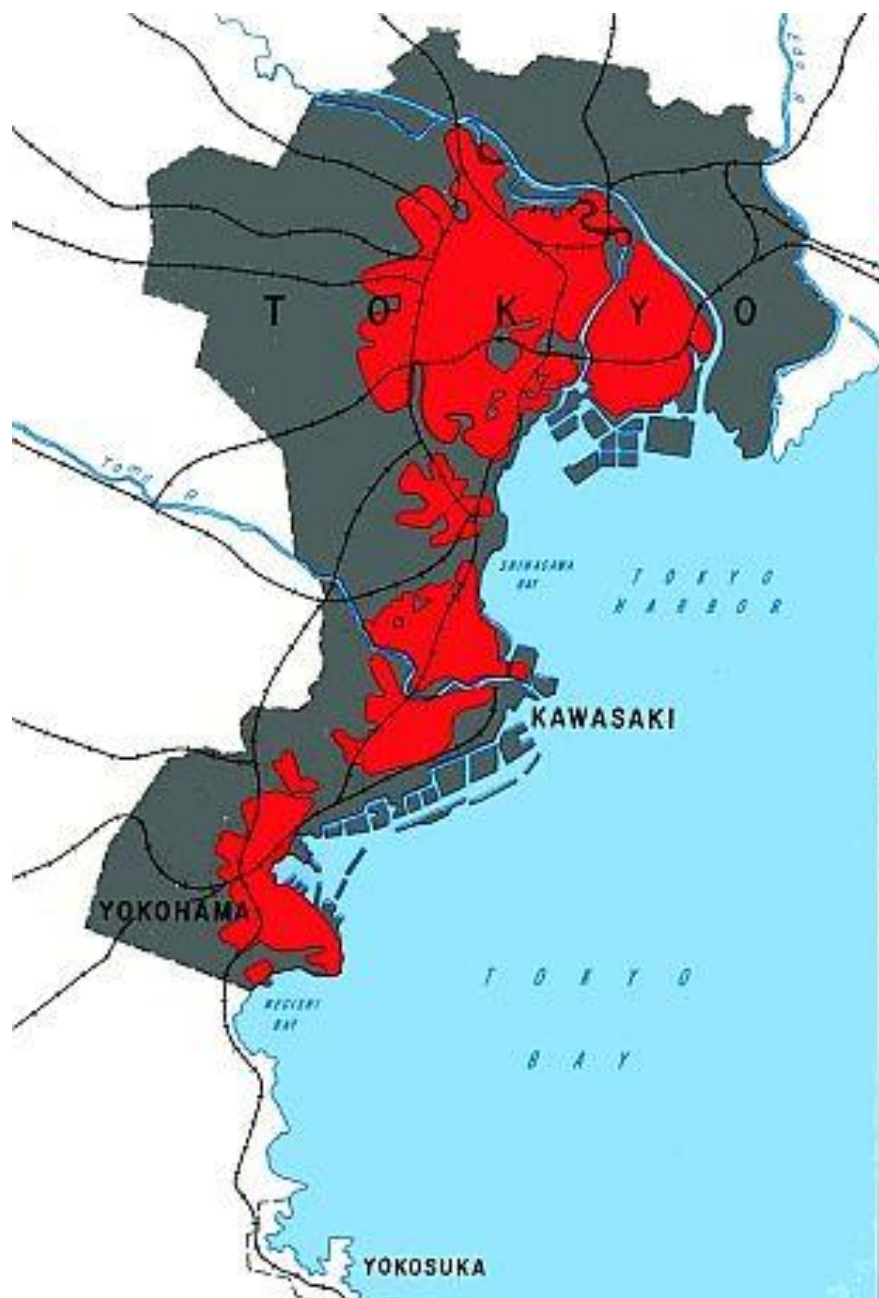
**TOKYO AFTER THE  
WAR SHOWING THE  
EXTENT OF DAMAGE  
CAUSED BY THE FIRE  
BOMBING ON 9-10  
MARCH 1945**

**IT IS ESTIMATED  
THAT UP TO 100,000  
PEOPLE DIED AND UP  
TO A MILLION WERE  
INJURED!**

**286,358 BUILDINGS  
WERE DESTROYED  
AND UP TO ANOTHER  
MILLION PEOPLE  
WERE MADE  
HOMELESS!**







#### LEGEND



Burned-out Areas

#### JAPANESE CITIES

#### THE BOMBING OF JAPAN

Extent of Destruction by Bombing  
of Principal Cities



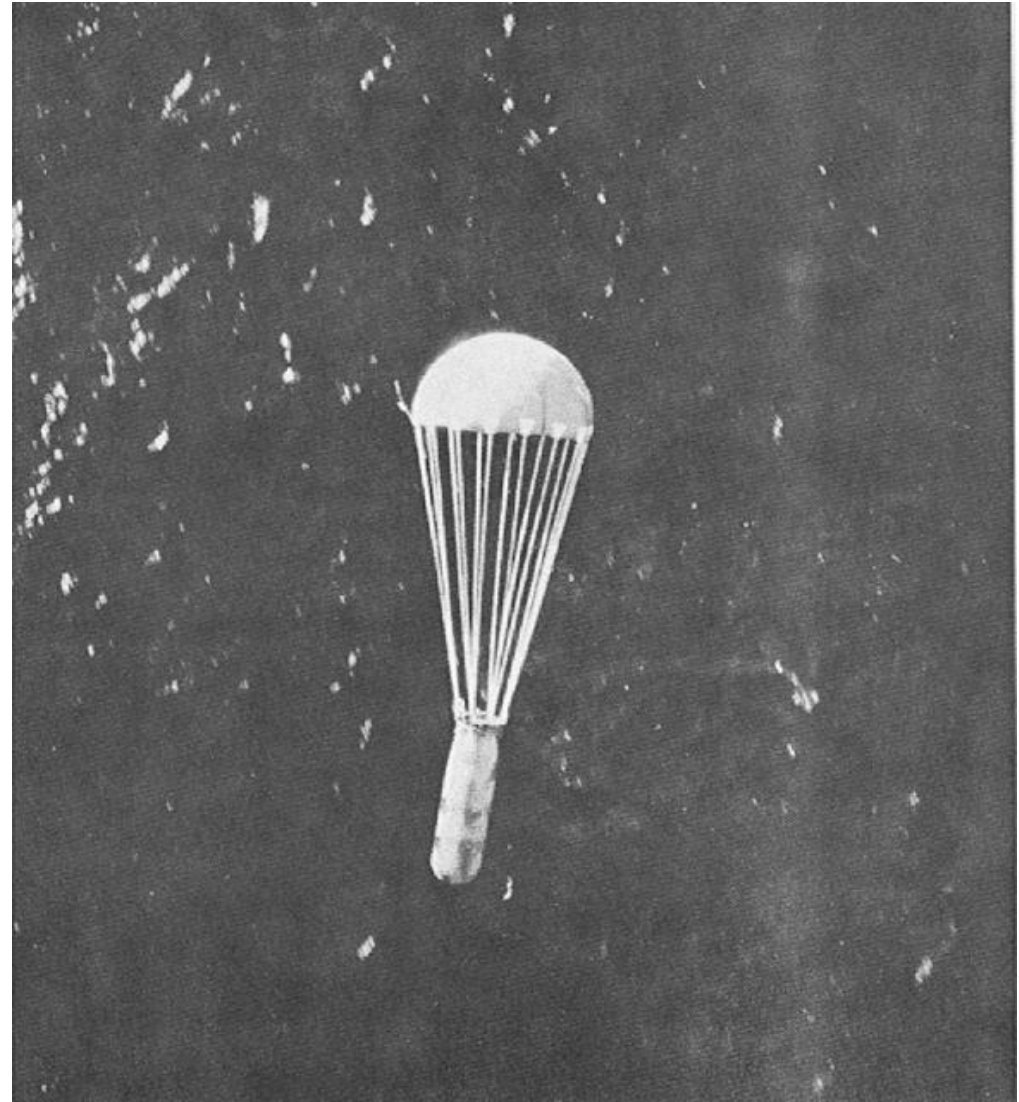
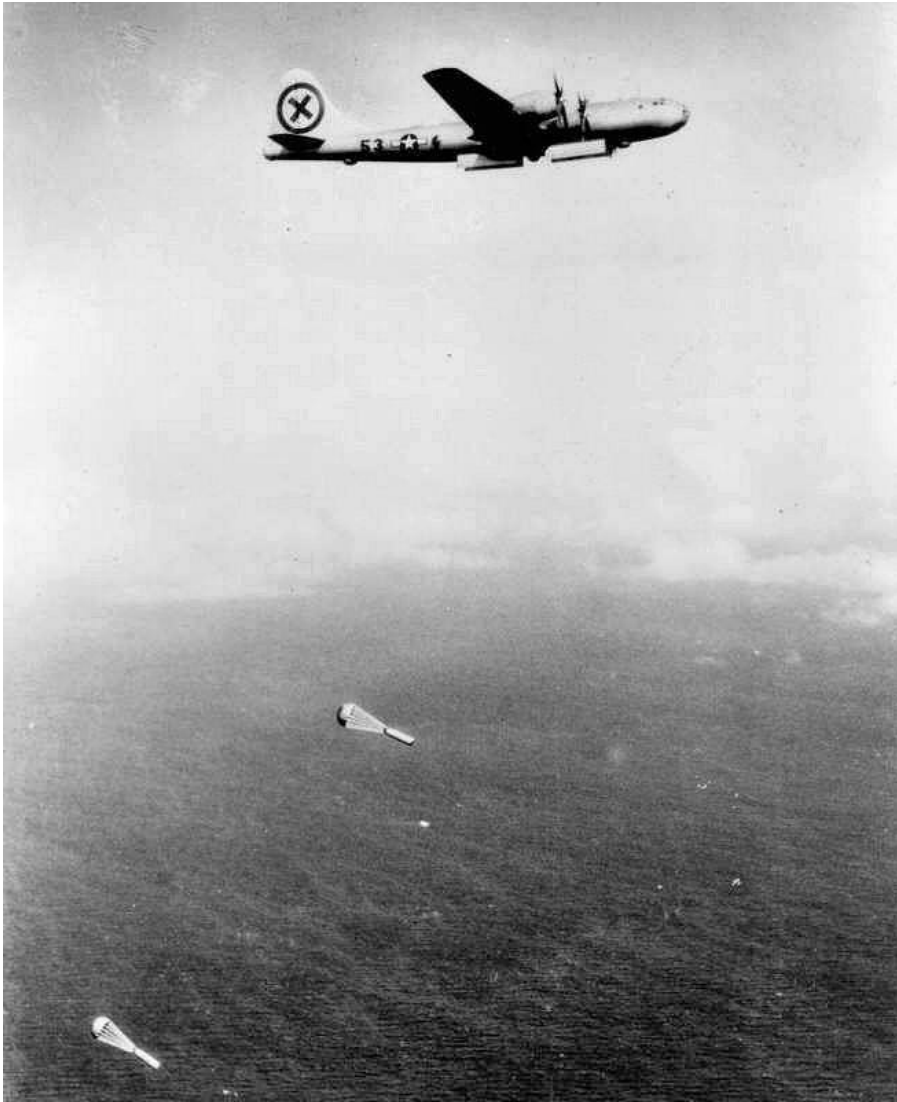






**THE US NAVY  
AND ROYAL  
NAVY'S  
AIRCRAFT  
CARRIER FORCES  
ATTACKING THE  
JAPANESE  
MAINLAND  
DURING 1945**

USS BENNINGTON



## OPERATION STARVATION



# Operation Downfall

## The Invasion of Japan

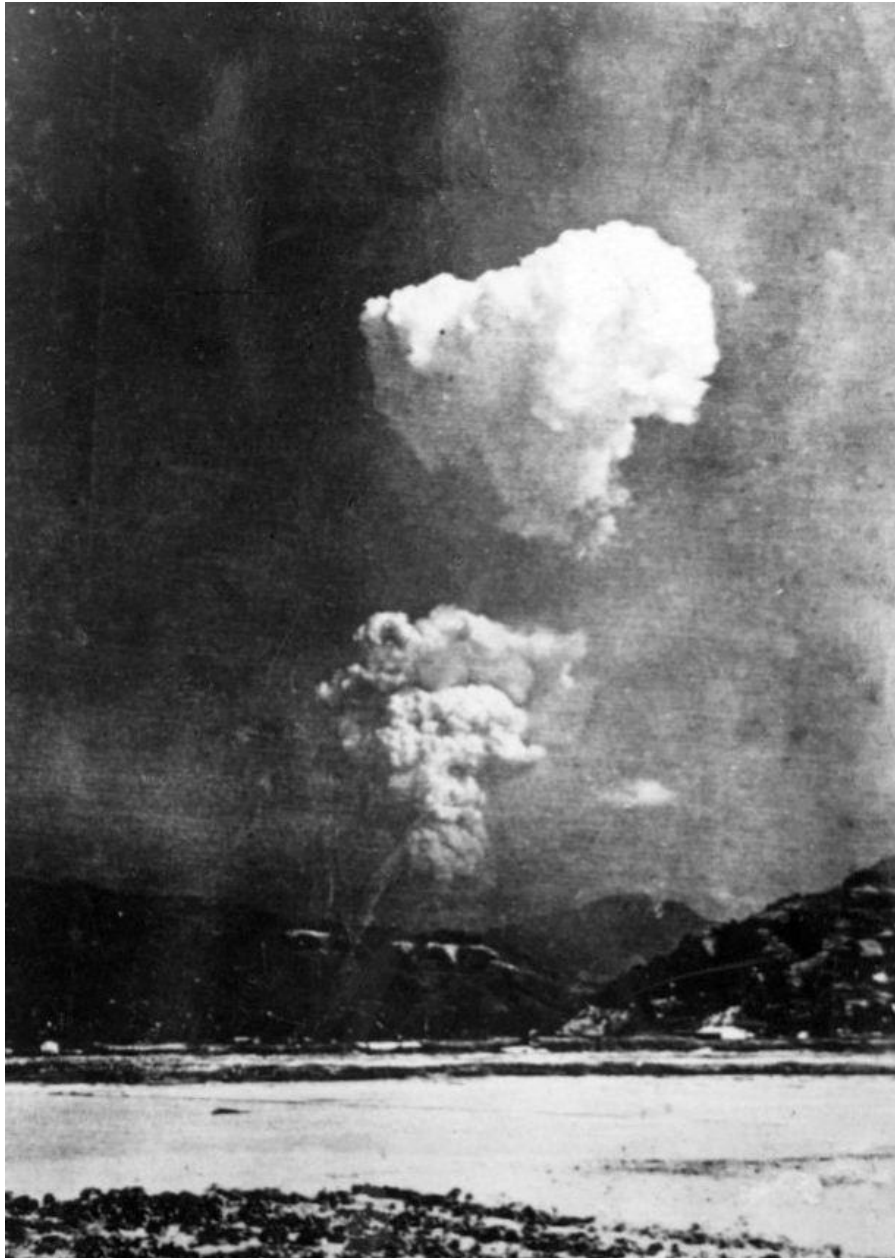


**OPERATION  
CORONET**

**OPERATION OLYMPIC**

# THE ESTIMATED RESISTANCE OPERATION OLYMPIC

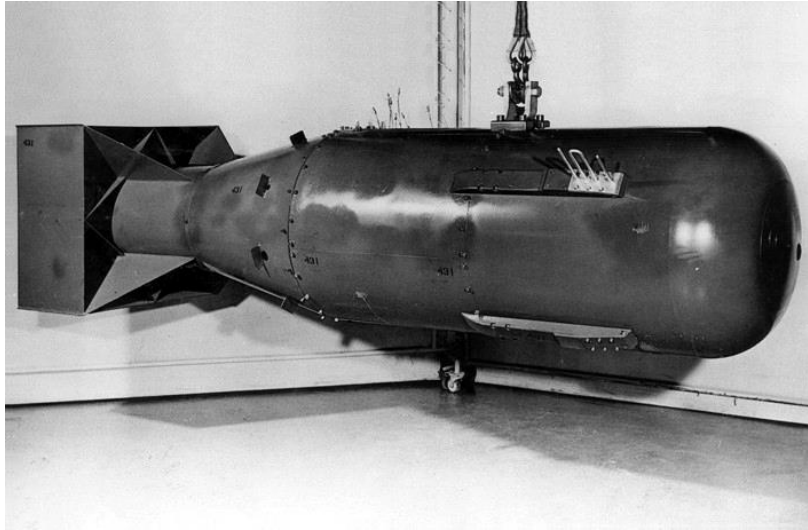
- 12,700 AIRCRAFT ON THE HOME ISLANDS (HALF KAMIKAZE)
- NUMEROUS SUICIDE MANNED TORPEDOES, MIDGET SUBMARINES AND MOTOR BOATS
- 900,000 SOLDIERS ON KYUSHU (14 DIVISIONS + 3 TANK BRIGADES)
- ESTIMATED ALLIED CASUALTIES.... ANYTHING UP TO 1 MILLION KILLED AND WOUNDED (500,000 PURPLE HEART MEDALS ORDERED)
- JAPANESE HAD ORDERED EXECUTION OF SOMETHING IN THE ORDER OF 100,000 ALLIED PRISONERS OF WAR IN THE EVENT OF THE INVASION OF THE HOME ISLANDS



**THE ATOMIC BOMBING  
OF HIROSHIMA 6 AUGUST  
AND NAGASAKI 9  
AUGUST 1945**







‘LITTLE BOY’ –  
THE HIROSHIMA  
BOMB



‘FAT MAN’ –  
THE NAGASAKI  
BOMB

***REFERRING TO “ ..... THE  
BOMBING OF GERMANY AND  
JAPAN, THE DESTRUCTION .....  
REPRESENTED A DELIBERATE  
AND SUCCESSFUL STRATEGY TO  
BREAK THE WILL OF AN  
INTRANSIGENT, DEEPLY  
COMMITTED ENEMY.”***